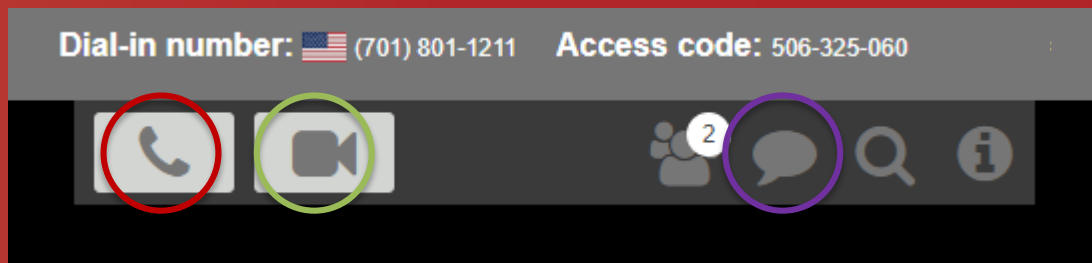


Thank you for joining:

AIDSVu's 2017 State-Level PrEP Data Update

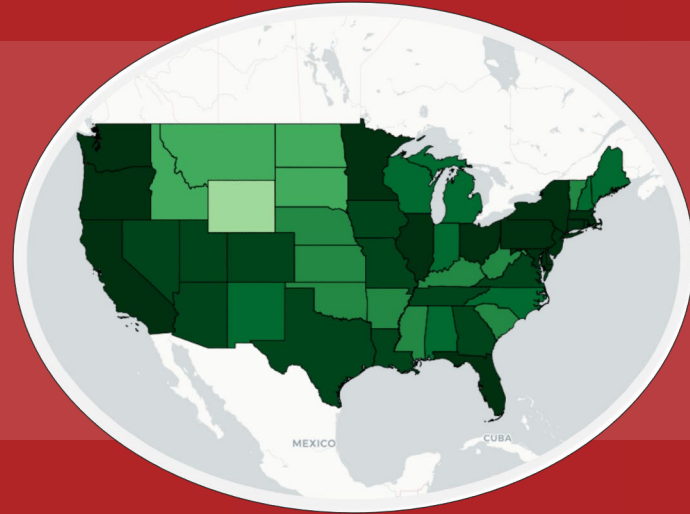
The webinar will begin at 4 pm EST/ 1 pm PT



- *Join the call via phone or computer by clicking the phone button*
- *We will not be using webcams for this presentation, turn off your webcam with the camera button*
- *To submit questions, click the chat icon and type your question before hitting the “enter” key*

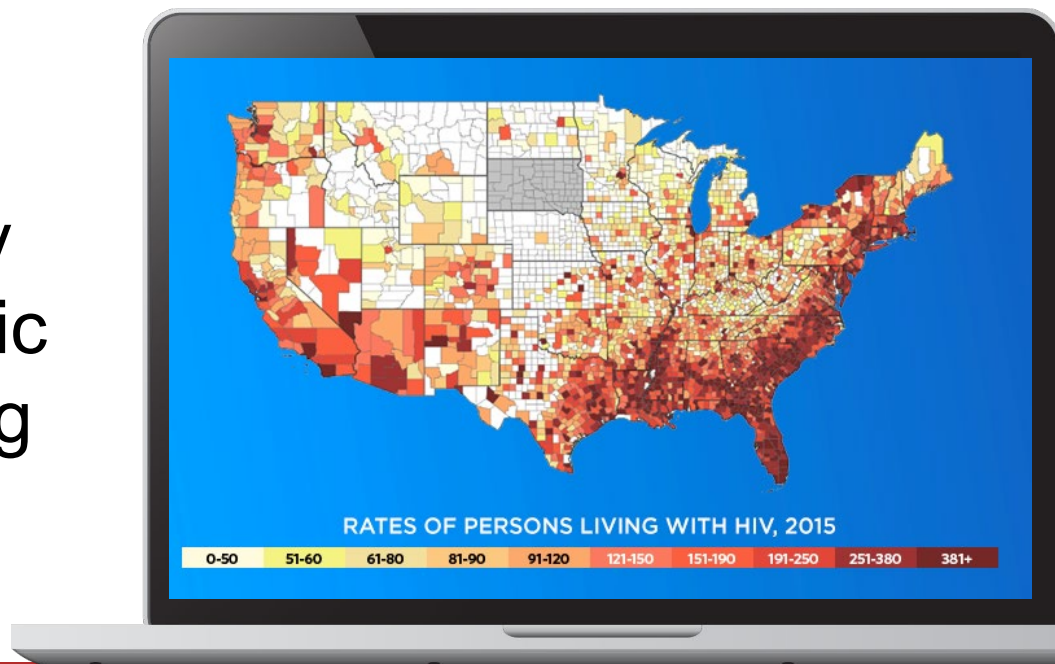
2017 State-Level PrEP Data

Patrick Sullivan, DVM, PhD, Professor, Department of Epidemiology, Emory University, Rollins School of Public Health



AIDSVu's Mission

Making data widely
available, easily
accessible and locally
relevant to inform public
health decision-making

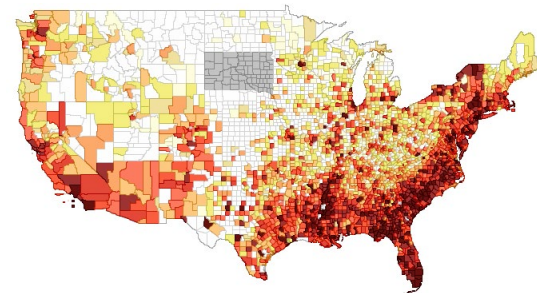


Background on AIDSvu

- Interactive online mapping tool to visualize the U.S. HIV epidemic using latest data on HIV prevalence, new diagnoses, & mortality
 - County-level for 48 states
 - ZIP code-level for 41 cities, which collectively represent over 60% of U.S. HIV epidemic
- Partnership since 2010 between Gilead Sciences and Emory University's Rollins School of Public Health

State or territory	Diagnosis 2010			Persons with HIV infection		
	No.	%	% of total	No.	%	% of total
All of persons	10,243	100	100	1,000,000	100	100
Age group, years						
<15	1	0.0	0.0	10	1.0	0.1
15-24	1,474	14.4	14.4	100,000	10.0	10.0
25-34	3,000	29.3	29.3	200,000	20.0	20.0
35-44	2,500	24.4	24.4	200,000	20.0	20.0
45-54	1,400	13.7	13.7	100,000	10.0	10.0
55-64	700	6.8	6.8	50,000	5.0	5.0
65-74	300	2.9	2.9	20,000	2.0	2.0
≥75	173	1.7	1.7	10,000	1.0	1.0
Sex						
Male	6,000	58.6	58.6	500,000	50.0	50.0
Female	4,243	41.4	41.4	500,000	50.0	50.0
Race/ethnicity						
White	3,000	29.3	29.3	200,000	20.0	20.0
Black	3,000	29.3	29.3	200,000	20.0	20.0
Hispanic	2,500	24.4	24.4	200,000	20.0	20.0
Other	1,743	16.9	16.9	100,000	10.0	10.0
Education level						
<High school	1,400	13.7	13.7	100,000	10.0	10.0
High school	2,500	24.4	24.4	200,000	20.0	20.0
Some college	2,500	24.4	24.4	200,000	20.0	20.0
College graduate	1,400	13.7	13.7	100,000	10.0	10.0
Postgraduate	443	4.3	4.3	30,000	3.0	3.0

HIV, Human Immunodeficiency Virus.



PrEP Data on AIDSVu

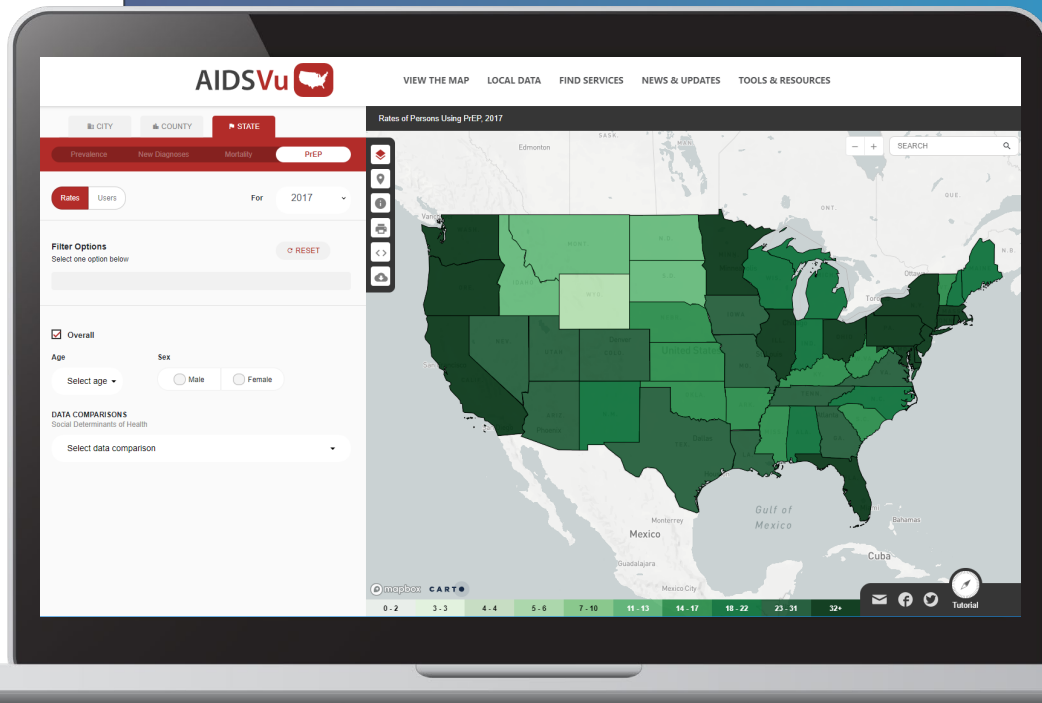
Background on PrEP

- CDC estimates that approximately 1.1 million people are at high-risk for HIV exposure and could benefit from comprehensive HIV prevention strategies, including PrEP
- Number of PrEP users has increased by more than 1,000% since 2012
- PrEP use varies significantly across different sexes, age groups, races/ethnicities, and states/geographic regions



PrEP Data on AIDSVu

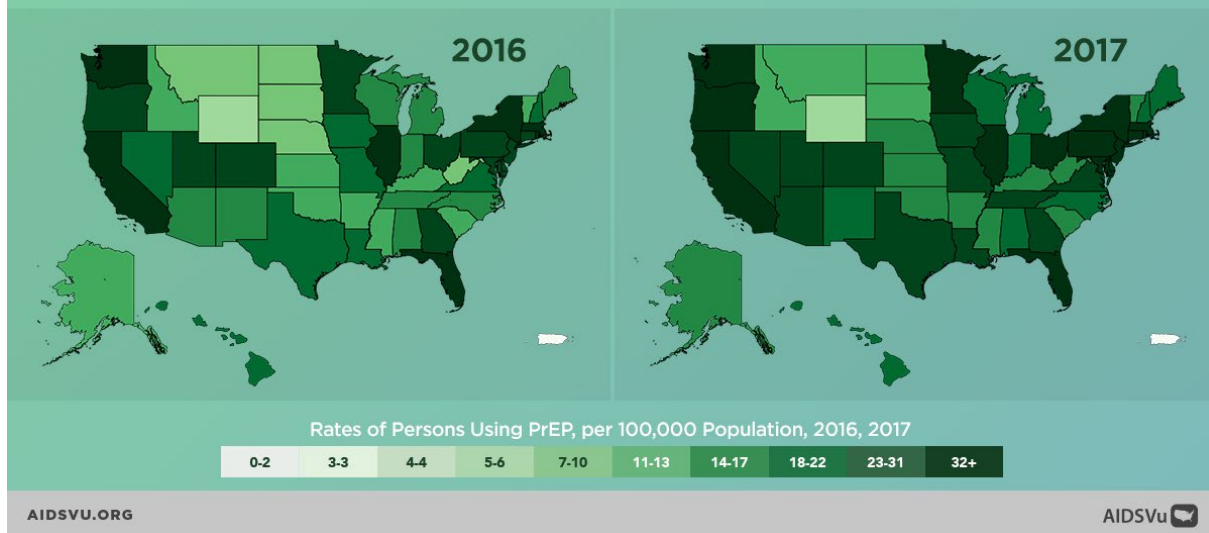
- In March 2018, AIDSVu released the **first-ever state-level data** and interactive maps of **PrEP users** and rates of PrEP use per 100,000 population ("PrEP Prevalence")
- Today, we added 2017 state-level data and maps



PrEP Data on AIDSVu

PrEP use has been **increasing** every year.

The number of PrEP users grew by **29%** between 2016 and 2017.



State-level maps and datasets include:

- PrEP users and Rate of PrEP use
- Yearly data 2012 to 2017
- Overall, by sex, and by age
- Available alongside social determinants of health

Data Source

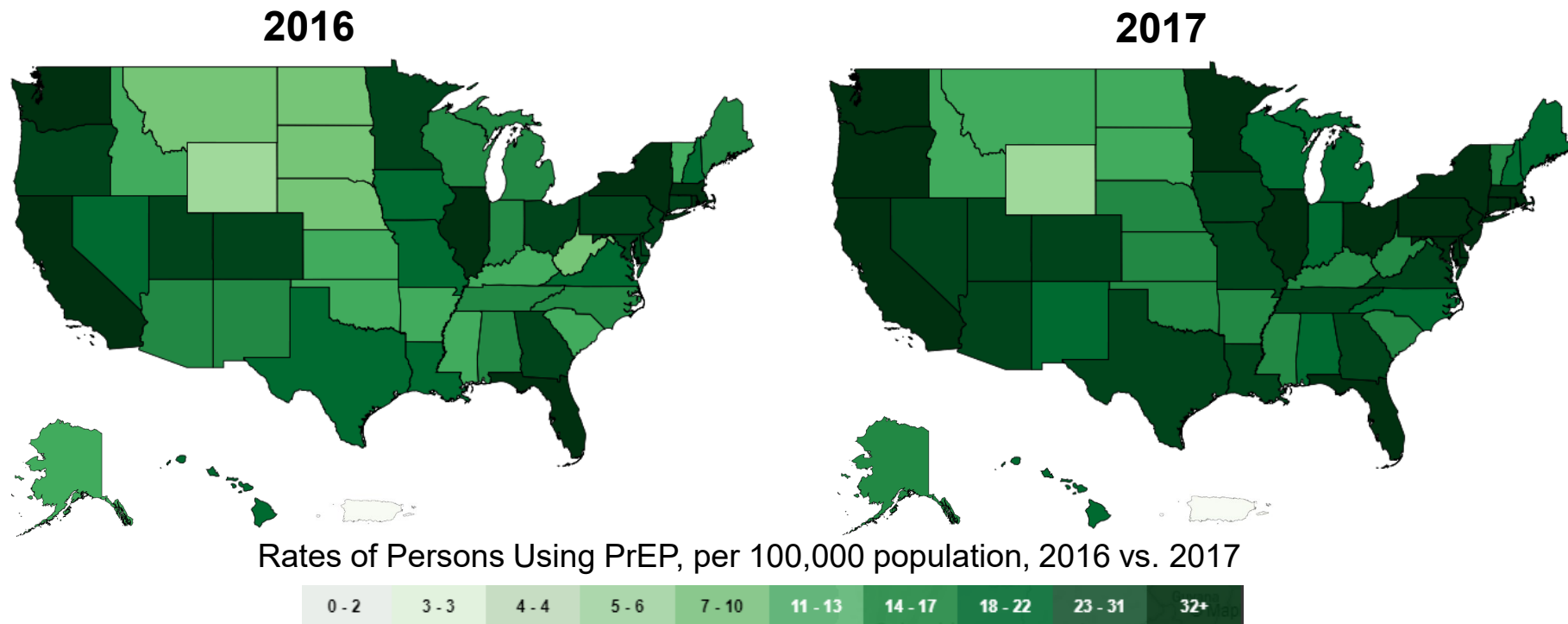
- **First of its kind data release agreement:** Data obtained from Symphony Health with the support of Gilead Sciences, Inc., and compiled by researchers at the Rollins School of Public Health at Emory University
- **No single entity** collects data on all users of PrEP in the U.S.
- Data on AIDSVu derived from a single data source (Symphony Health) – open sample of commercially available data from more than **54,000 pharmacies, 1,500 hospitals, 800 outpatient facilities, and 80,000 physician practices**
- **Validated algorithm** excludes use for HIV treatment, post-exposure prophylaxis, and off-label treatment of chronic Hepatitis B

Data Source, Continued

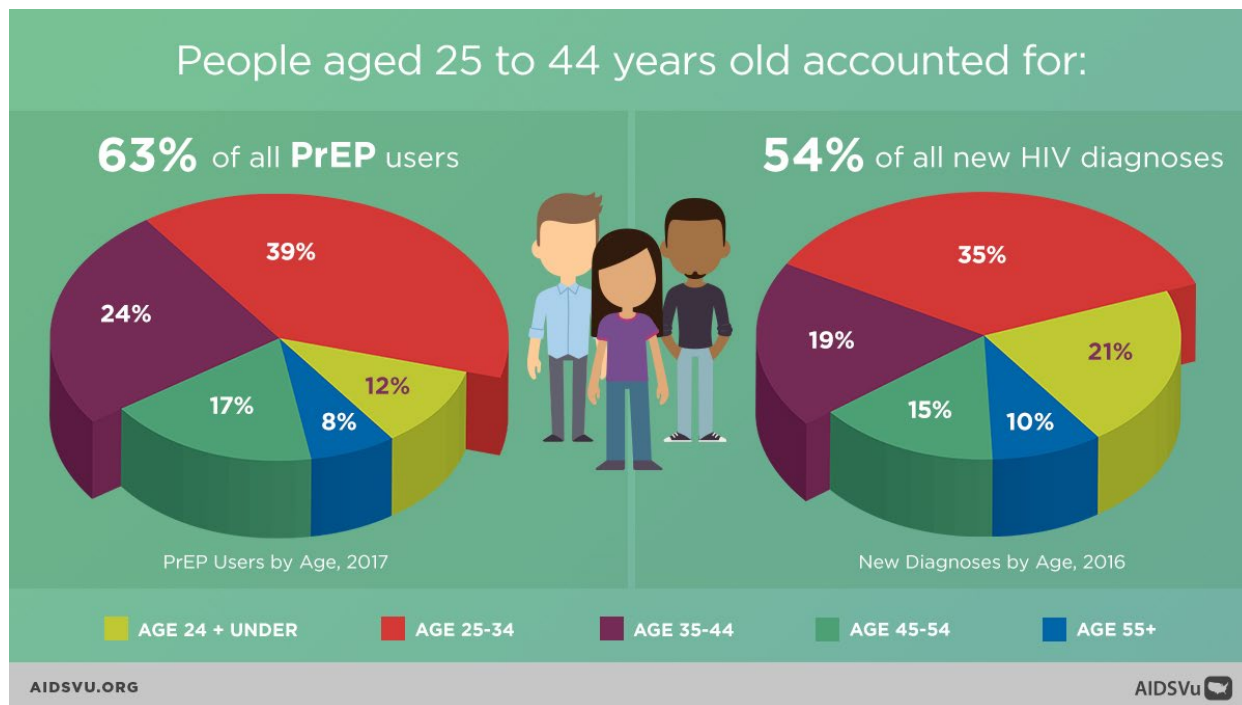
- AIDSVu's PrEP data represents a **conservative, or minimum, number** of PrEP users in the U.S. by year. The actual number of PrEP users is higher.
 - Dataset does not contain all TDF/FTC prescriptions in the U.S. For example, dataset does not include data from closed healthcare systems and other entities that do not share their data with Symphony Health.
 - Dataset excludes TDF/FTC prescriptions that do not have sufficient medical procedure or diagnosis codes to confirm that the prescription was for PrEP and not for any other use.
 - Dataset presents “raw” data – data that are not adjusted or projected in any way to account for known sources of undercounting or missing data.
- AIDSVu's PrEP data provides **consistent, comparable, replicable** estimates of annual PrEP users by state with known limitations that are described to the best extent possible. These data are well suited to be used for **public health research and planning purposes**.

2017 State-Level PrEP Findings

Findings from 2017 Data



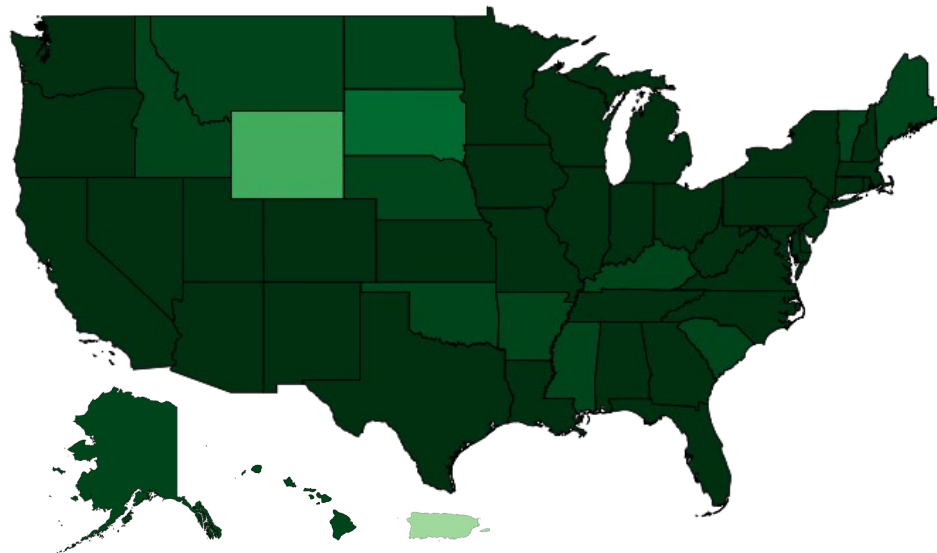
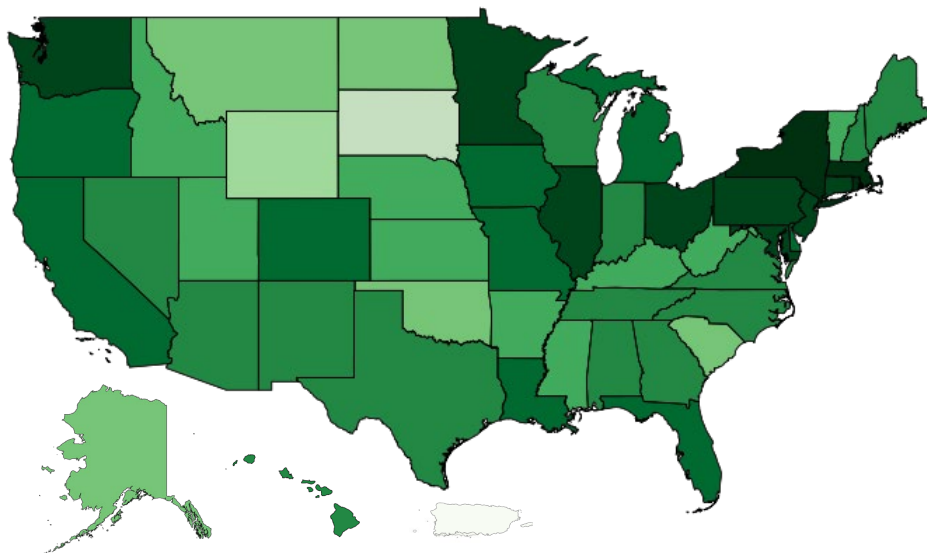
Findings from 2017 Data



Findings from 2017 Data

24 or Under

Aged 25 to 34

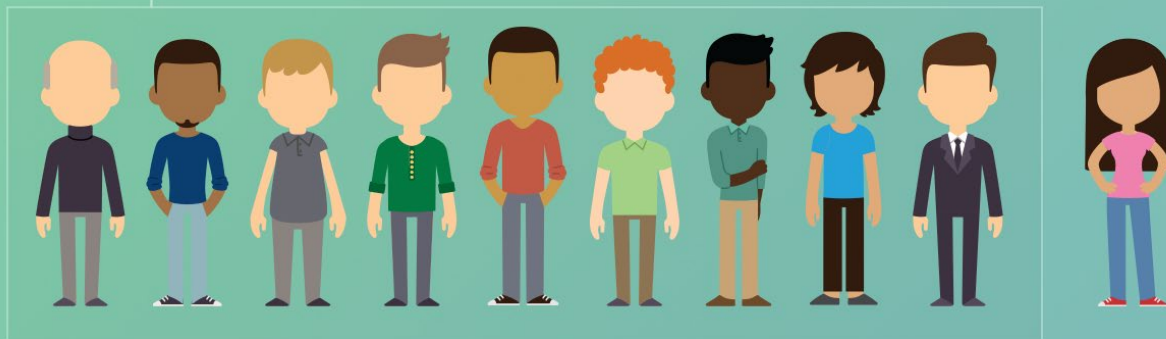


Rates of Persons Using PrEP, per 100,000 population, 24 and Under vs. Aged 25-34




Findings from 2017 Data

94% of all **PrEP** users in 2017 were men.



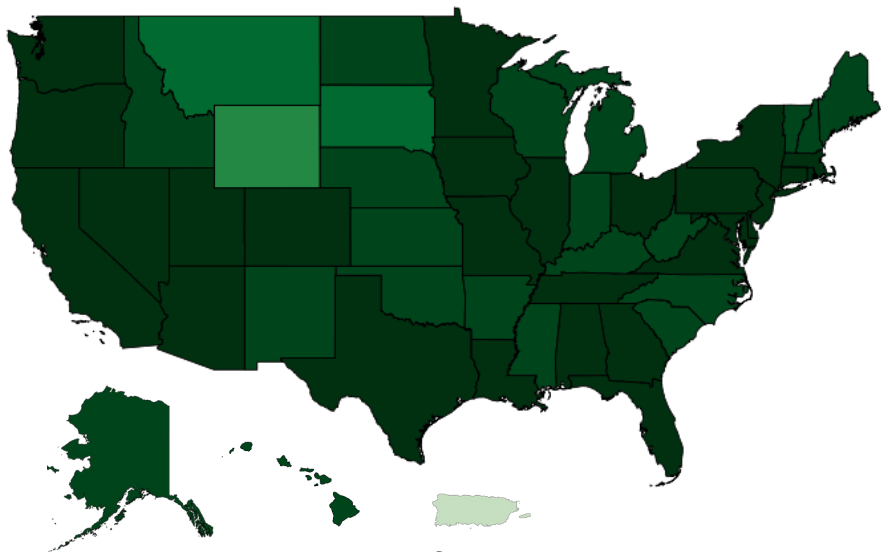
That's **16X more** male **PrEP** users than female.

AIDSVU.ORG

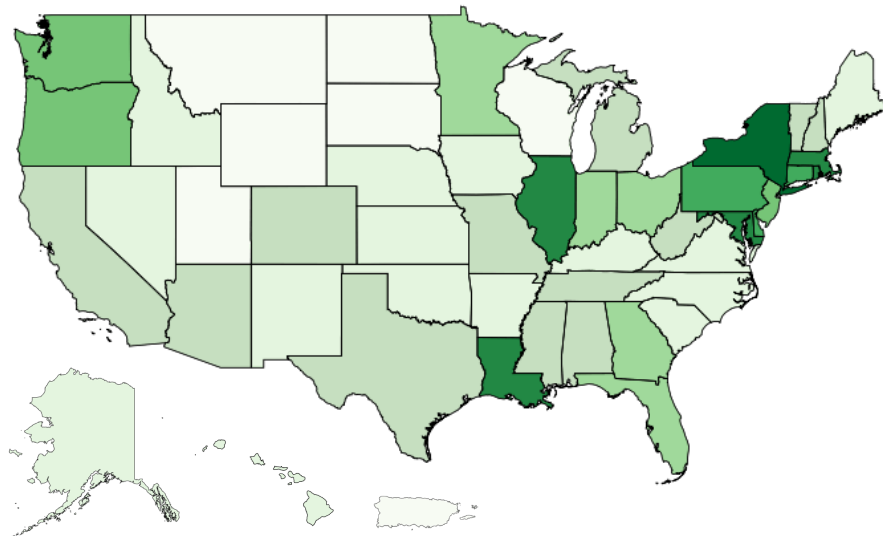
AIDSVu 

Findings from 2017 Data

Male



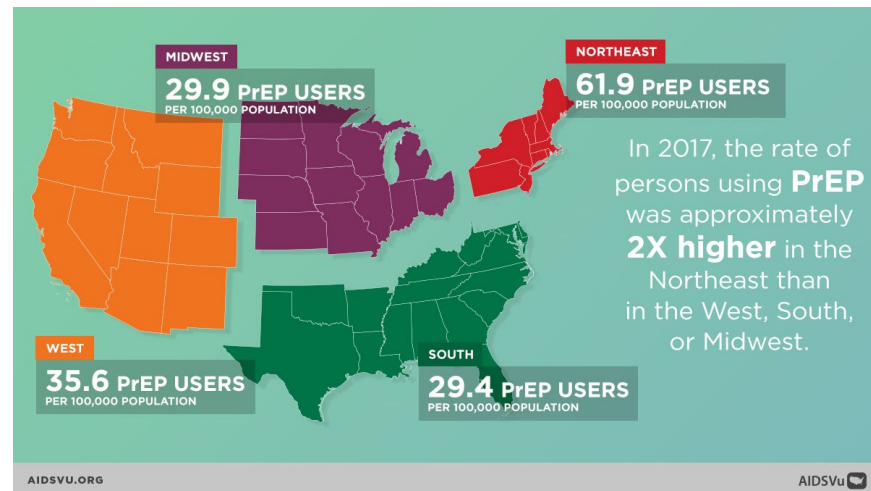
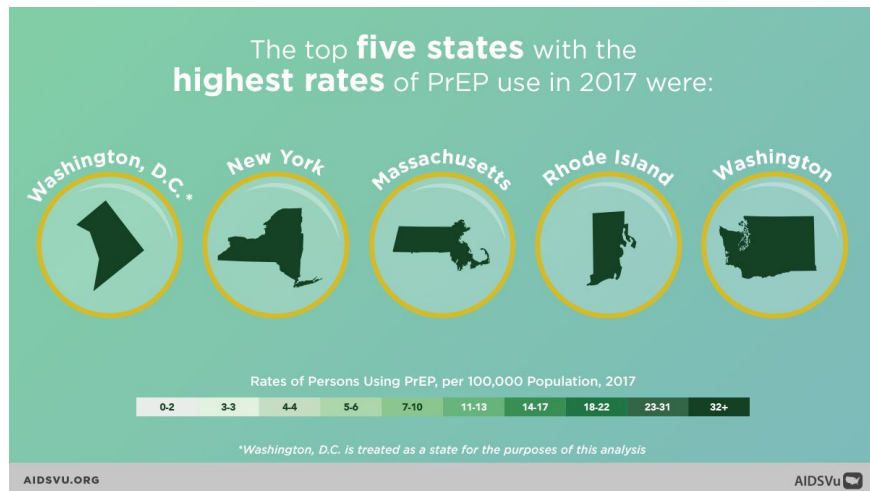
Female



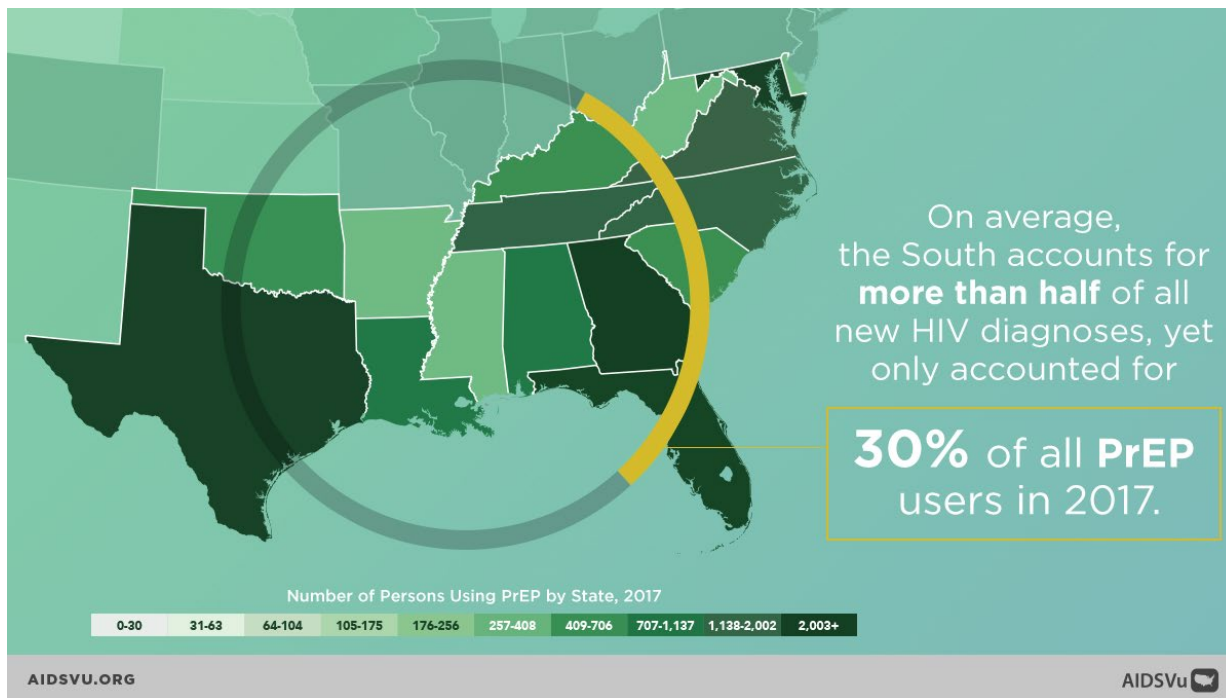
Rates of Persons Using PrEP, per 100,000 population, Male vs. Female



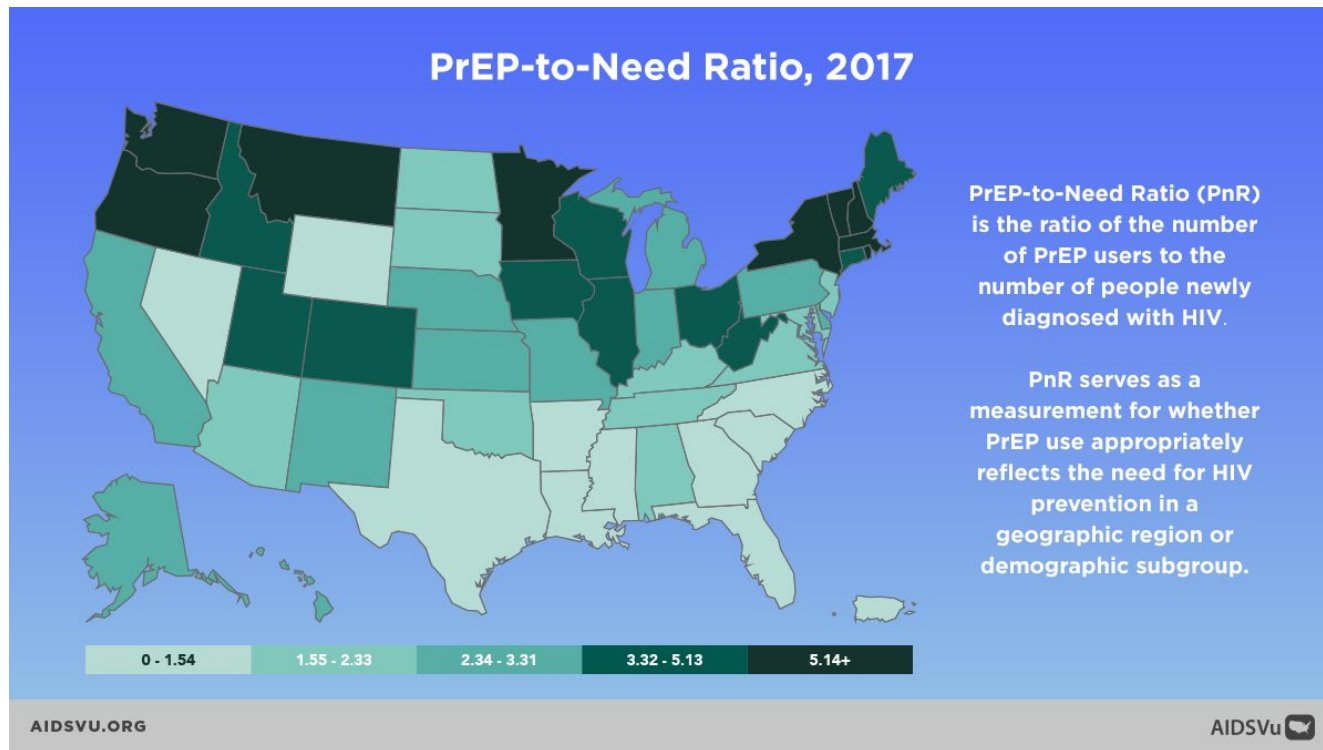
Findings from 2017 Data



Findings from 2017 Data



PrEP-to-Need Ratio



Examples of PrEP Data in Use since March 2018 Launch

Examples of PrEP Data in Use

- **IAS Abstract:** The impact of pre-exposure prophylaxis with TDF/FTC on HIV diagnoses, 2012-2016, United States
- **Papers:**
 - Trends in the use of oral emtricitabine/tenofovir disoproxil fumarate for pre-exposure prophylaxis against HIV infection, United States, 2012-2017
 - The prevalence of pre-exposure prophylaxis use and the pre-exposure prophylaxis-to-need ratio in the fourth quarter of 2017, United States

The Washington Post

Everyone at high risk of HIV should be offered preventive meds, panel says



Growth in the use of PrEP has been rapid, according to a 2018 study led by epidemiologists at the Rollins School of Public Health at Emory University in Atlanta. Its use rose from 3.3 people per 100,000 population in 2012 to 36.7 people in 2017. But use of the medication is more than twice as frequent in the Northeast than it is in the South, the researchers found, even though a disproportionate number of new HIV diagnoses occur in Southern states.



PrEP Data Sensitivity Analysis

Annals of Epidemiology

Trends in the use of oral emtricitabine/tenofovir disoproxil fumarate for pre-exposure prophylaxis against HIV infection, United States, 2012-2017

Sensitivity analysis of estimated pre-exposure prophylaxis (PrEP) users in 2017, by reasonable estimates of missing pharmacy data and classification of TDF/FTC monotherapy as PrEP

		Percent of TDF/FTC prescriptions not captured by Source Healthcare Analytics*				
		0%	10%	20%	25%	30%
Percent of unclassified TDF/FTC monotherapy used for PrEP [†]	0%	100,282	111,424	125,353	133,709	143,260
	25%	111,116	123,462	138,895	148,154	158,737
	50%	121,950	135,499	152,437	162,599	174,214
	75%	132,783	147,537	165,979	177,044	189,690
	87%	137,983	153,315	172,479	183,978	197,119
	100%	143,617	159,574	179,521	191,489	205,167

Bold values indicate “best estimates” of proportions of missing prescriptions, use of monotherapy TDF/FTC for PrEP, and PrEP users.

* Source Healthcare Analytics estimates that 20% of all prescriptions are not included in their database.


[†] In a previous analysis (data not shown) of TDF/FTC monotherapy, 87% was for PrEP, 4% for management of chronic Hepatitis B infection, and 9% for HIV postexposure prophylaxis.


Other PrEP Resources on AIDSVu

Deeper Look: PrEP

Comprehensive Resource for PrEP on AIDSVu

- Maps and Service Locator
- Infographics & Video
- Why it Matters
- Guest Blogs
 - Dr. Bisola Ojikutu
 - Dr. Yusuf Ransome

AIDSVu 

VIEW THE MAP LOCAL DATA FIND SERVICES NEWS & UPDATES TOOLS & RESOURCES 

HOME · TOOLS & RESOURCES · DEEPER LOOK: PrEP

Deeper Look: PrEP

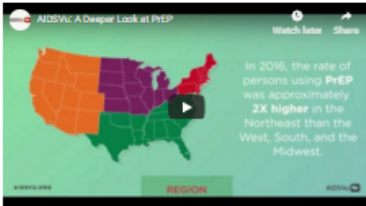
PrEP utilization data reveal a 73 percent increase in PrEP users year over year from 2012 to 2016, however, significant disparities exist across different sexes, age groups, and geographic regions.

PrEP, or [pre-exposure prophylaxis](#), is when people at high risk for HIV take HIV medicine daily to lower their chances of getting infected with HIV. A recent Centers for Disease Control and Prevention (CDC) analysis estimates that [approximately 1.35 million people](#) are at high risk for HIV exposure and could benefit from comprehensive HIV prevention strategies, including PrEP.

What is Pre-exposure prophylaxis (PrEP)?

- 1 Pre – before
- 2 Exposure – coming into contact with HIV
- 3 Prophylaxis – treatment to prevent an infection from happening




The PrEP utilization data on AIDSVu reveal that in 2016, there were 77,000 PrEP users in the U.S., up from 8,716 in 2012. That is a 73 percent increase year over year from 2012 to 2016. However, significant disparities in PrEP use exist across different sexes, age groups, and geographic regions. Nearly [30,000 individuals](#) were newly diagnosed with HIV in 2014, highlighting the need to continue expanding the use of PrEP and other comprehensive HIV prevention strategies.



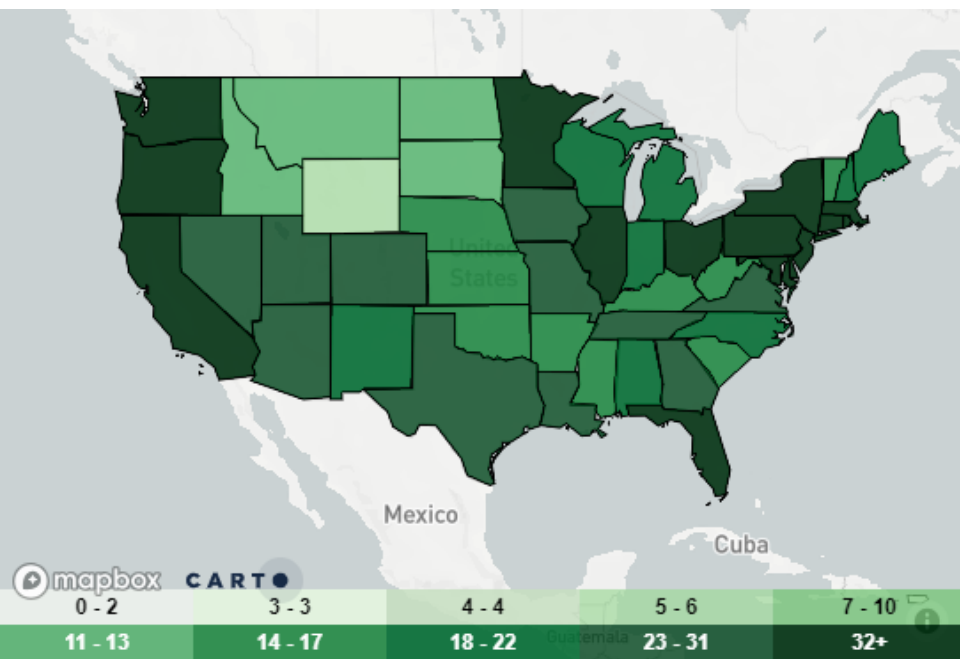
In 2016, the rate of persons using PrEP was approximately **2X higher** in the Northeast than the West, South, and the Midwest.

AIDSVu's maps visualize data on PrEP use at the state level by year and break down the data by age and sex. These data and maps offer important information and tools to public health officials, policymakers, and researchers to inform efforts to increase PrEP awareness and increase uptake where it is needed most. Please see the [Data Methods](#) page for additional information on the data set and its limitations.

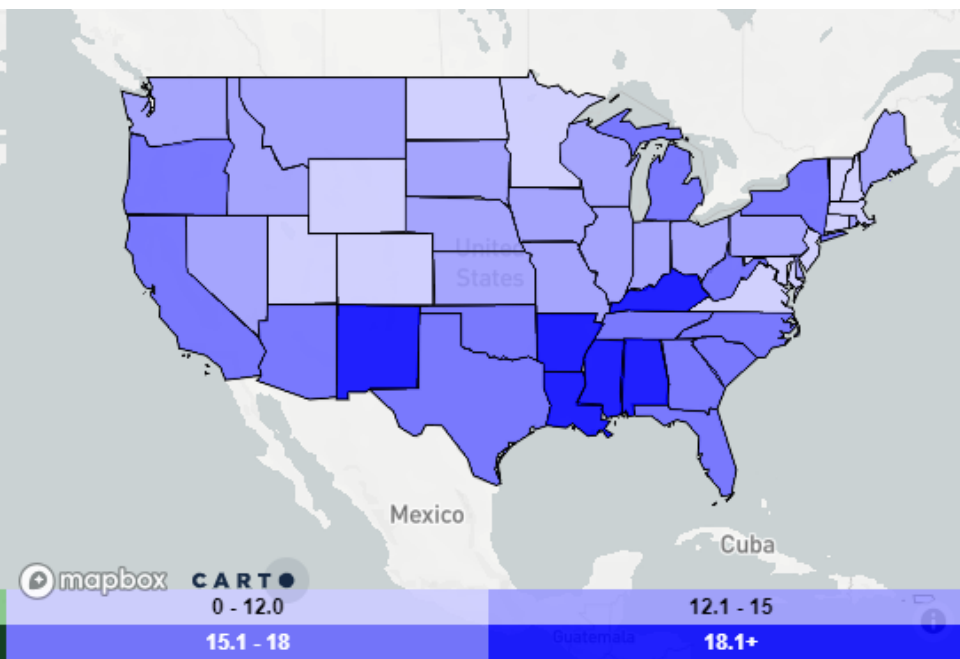
Using the PrEP Data

 Public Health Officials & Policy Makers	 Researchers	 Community
<ul style="list-style-type: none">1 Understand local PrEP use and disparities in use to help inform data-driven policies and programs to increase awareness of and access to PrEP.2 Inform Getting to Zero campaigns as PrEP is an essential HIV prevention tool and one of four key focus areas in the National HIV/AIDS Strategy to reduce new HIV infections.	<ul style="list-style-type: none">1 Identify trends and gaps in PrEP uptake, outline facilitators and barriers to PrEP expansion, and determine areas for further exploration.2 Utilize data and maps to assist with planning processes, resource allocation, presentations, grant writing and review.	<ul style="list-style-type: none">1 Raise awareness of PrEP use in your community and the need to expand the use of PrEP among those at high risk of getting HIV.2 Educate your elected officials and encourage policy change to increase PrEP awareness and access.

PrEP Users & SDOH Data Comparisons



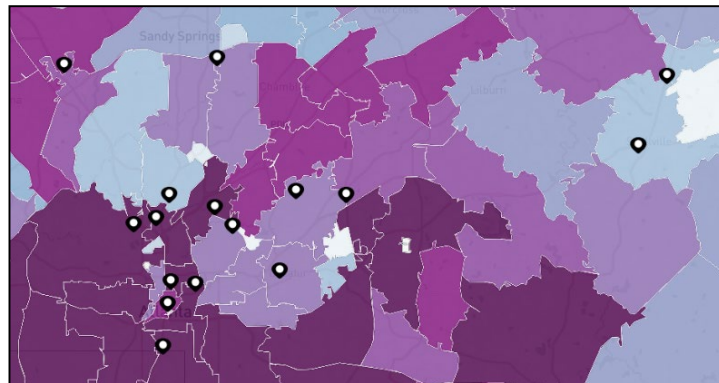
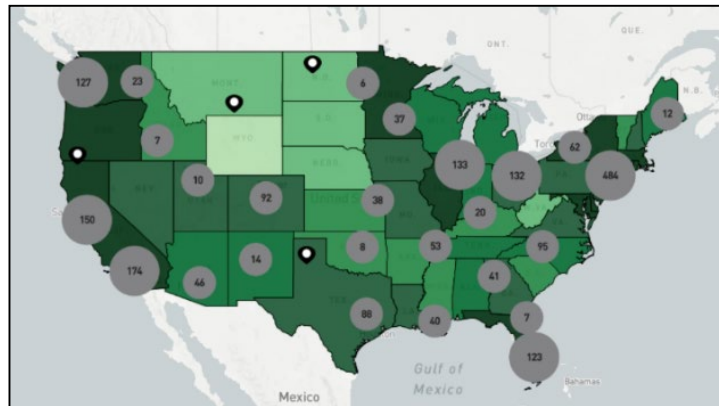
Rates of Persons Using PrEP, 2017



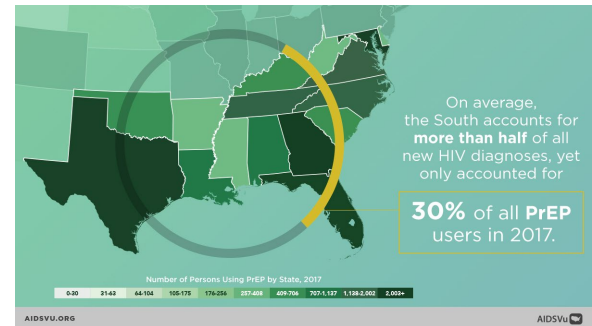
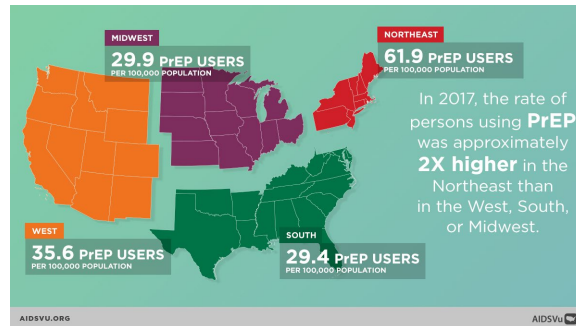
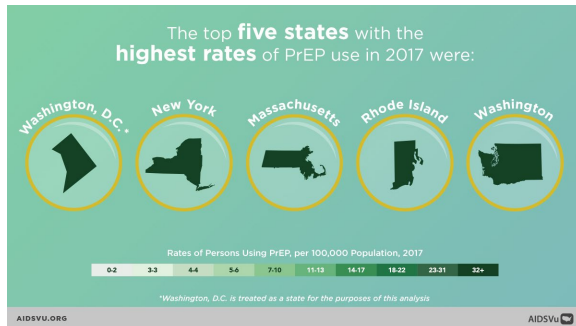
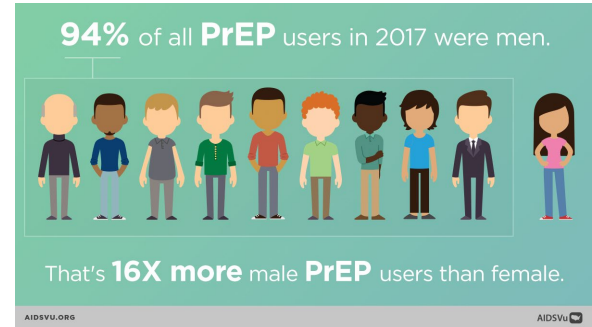
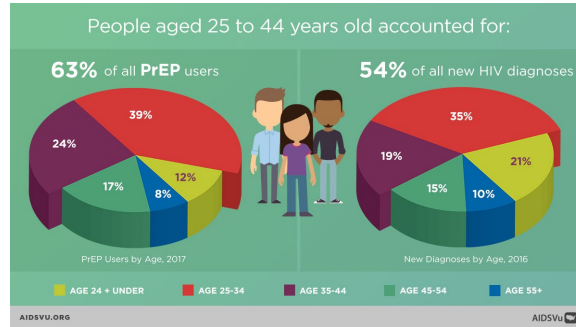
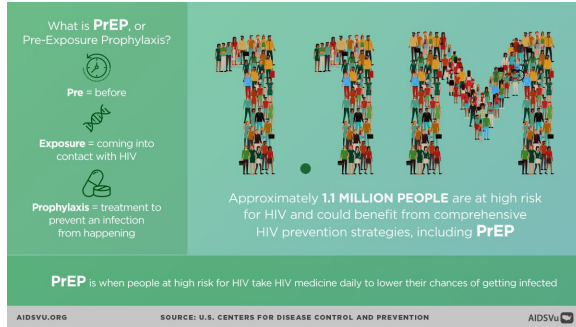
Percent of Population Living in Poverty, 2015

PrEP Locator

- National directory of HIV PrEP Providers in the U.S.
- Developed by Emory University with funding from M•A•C AIDS Fund, now managed by CDC NPIN
- Overlay PrEP providers with AIDSVu maps, or search for provider near you

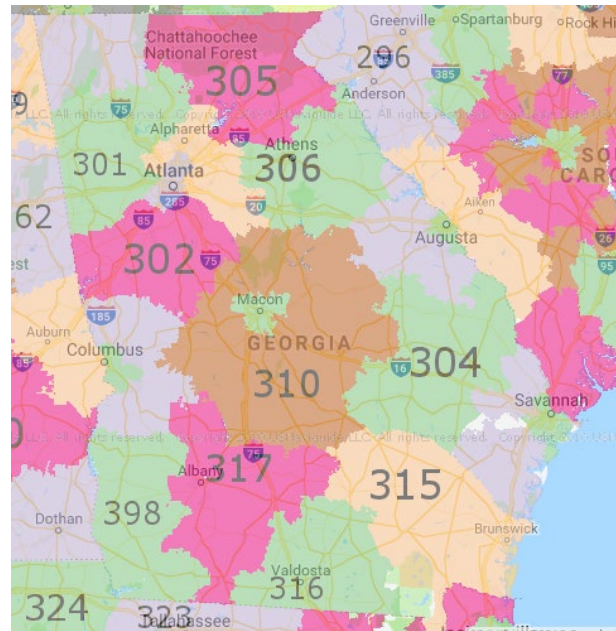


Infographics



Downloadable PrEP Data Sets

- Downloadable PrEP datasets at the state- and ZIP3-level for researchers and health departments to utilize in their own analyses
- ZIP3 refers to the three digit ZIP Code prefix assigned by the U.S. Postal Service



ZIP3 boundary example for Georgia

Upcoming PrEP Data

Next for PrEP on AIDSVu

Spring 2019:

2012-2017 County-level PrEP use data

Summer 2019:

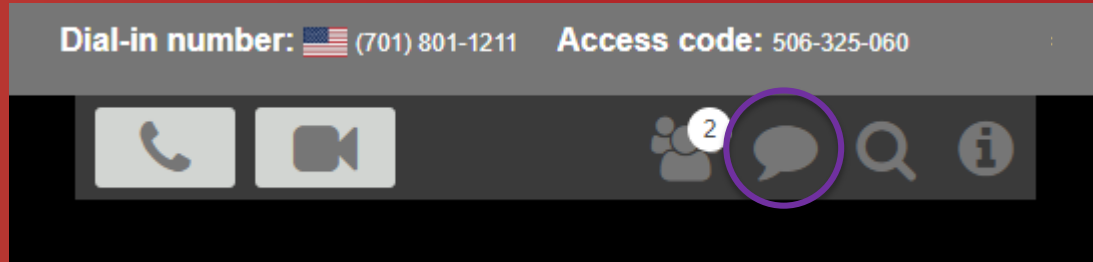
2018 State- and County-level PrEP use data

Late 2019:

State-level PrEP use by race/ethnicity



Thank you! Questions?



- *To submit questions, click the chat icon and type your question before hitting the “enter” key*

 info@AIDSVu.org

 AIDSVu

 @AIDSVU

AIDSVu 