

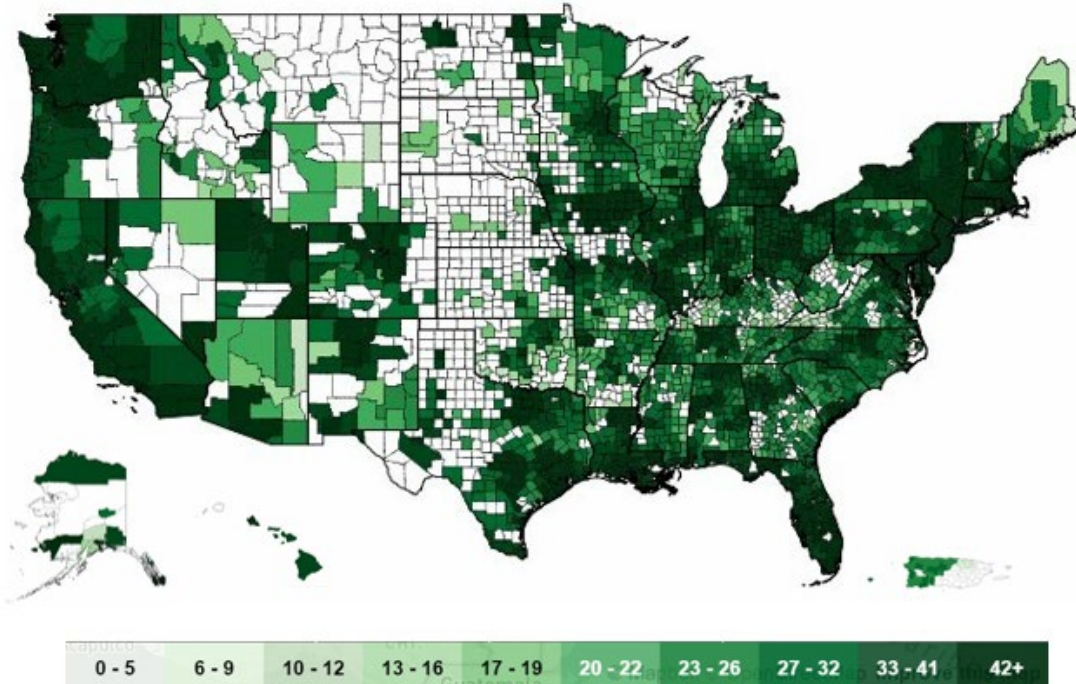


Overview of County-Level PrEP Data Launch

On April 15, 2020, AIDSVu released first ever county-level [data](#) and interactive [maps](#) visualizing PrEP use in the U.S. from 2012-2018, offering a more granular view of trends and disparities in PrEP use. This complements the state-level PrEP use data and maps first released in March 2018.

AIDSVu's maps visualize the growth in PrEP use at the county- and state-level by year and break down the data by age and sex. These data and maps provide reliable and consistent tools for public health officials, policymakers, and researchers to inform efforts to improve PrEP awareness and increase access where it is needed most.

Rates of Persons Using PrEP, per 100,000 population, 2018



PrEP Data Available on AIDSVu.org:

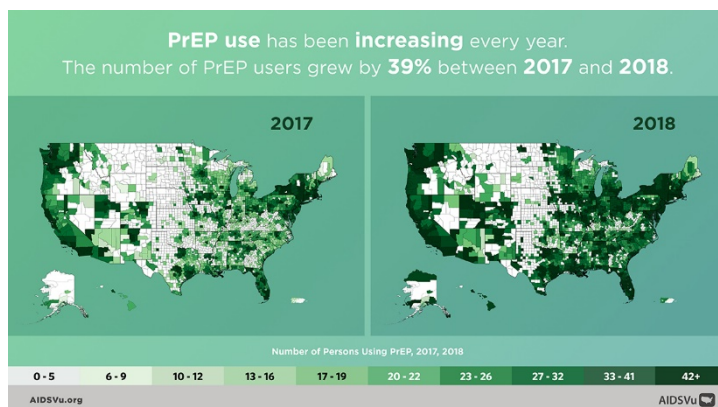
- Number of persons using PrEP at the county- and state-level (2012 to 2018) – overall, by age and by sex
- Rate of PrEP use, expressed as the number of persons using PrEP per 100,000 population at the county- and state-level (2012 to 2018) – overall, by age and by sex
- PrEP-to-Need Ratio (PnR), expressed as the number of PrEP users in 2018 to the number of people newly diagnosed with HIV in 2017. PnR serves as a measurement of how PrEP use compares to the need for PrEP in a population.
- Persons using PrEP mapped alongside social determinants of health – such as poverty, high school education, median household income, income inequality, and people without health insurance
- Datasets at national- regional- state- and county-levels.

AIDSVu's [Deeper Look: PrEP](#) page features interactive maps, PrEP infographics, blogs by experts in the field, and the [PrEP Services Locator](#), a national directory of PrEP providers in the U.S.

Key Insights from the 2018 Data

The number of PrEP users increased by 39% from 2017 to 2018, continuing a trend of consistent growth in PrEP use since 2012.

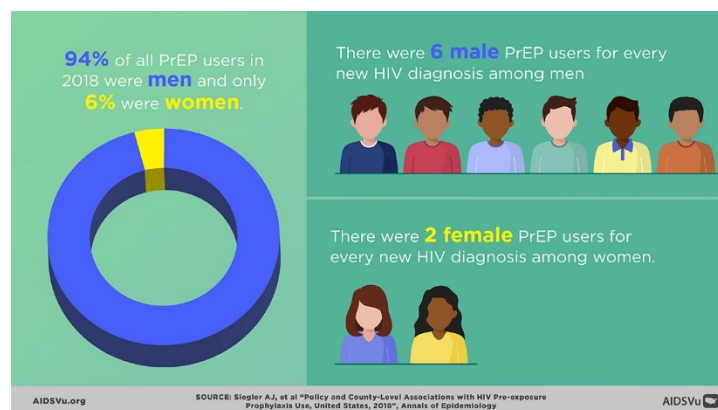
- The PrEP use data on AIDSVu reveal that since 2012, the number of PrEP users has increased by 1,700% with an average increase of 55% each year.



94% of all PrEP users in 2018 were men and only 6% were women. The PrEP-to-Need Ratio (PnR) for men (5.7) was 3.5 times higher than for women (1.6) in 2018, indicating fewer PrEP users among women relative to their need for PrEP.

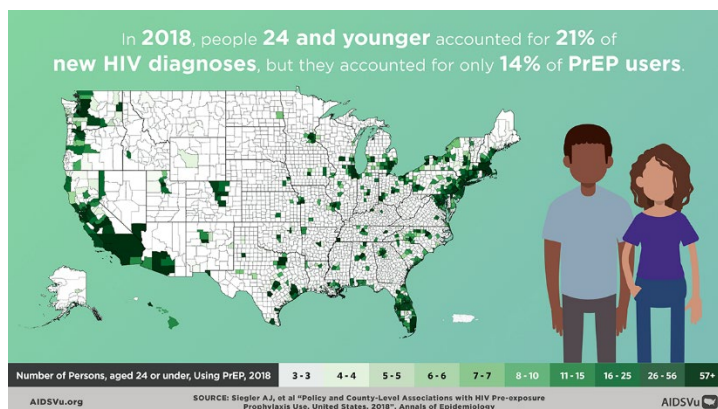
PnR is the ratio of the number of PrEP users in 2018 to the number of people newly diagnosed with HIV in 2017. PnR serves as a measurement of how PrEP use compares to the need for PrEP in a population. For example, a PnR of 1.6 means there were 1.6 women PrEP users for every woman newly diagnosed with HIV in the population.

- Women represented 6% of all PrEP users in 2018 but comprised 19% of all new HIV diagnoses in 2018.



The rate of PrEP use and PnR were lowest in those under age 25 (51.5 PrEP users per 100,000 population and 3.3 PnR) and over age 54 (15.9 PrEP users per 100,000 population and 3.7 PnR).

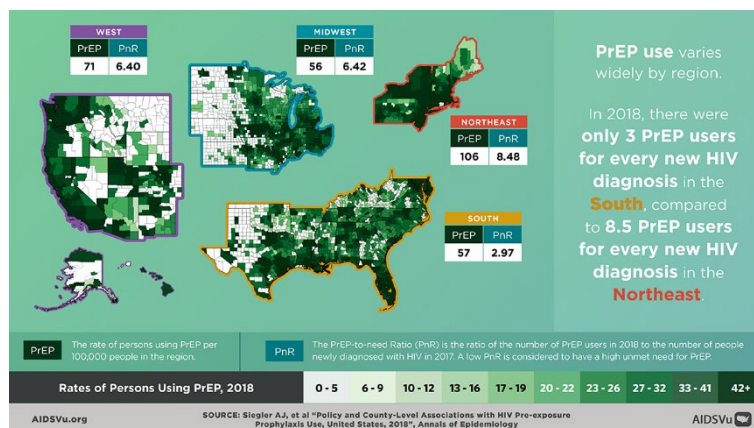
- People 24 and younger accounted for only 14% of PrEP users in 2018, while representing 21%* of new HIV diagnoses.
- The PnR for those 24 and younger was lowest (3.3), while the PnR for those 35-44 was almost twice as high (6.1) in 2018, indicating fewer PrEP users relative to the need for PrEP among those 24 and younger.
- Note: FDA approval for PrEP in adolescents did not occur until mid-2018, which may contribute to relatively low PrEP use in those under 18 years of age.



*Data are preliminary data obtained from CDC ATLAS <https://www.cdc.gov/nchhstp/atlas/index.htm>.

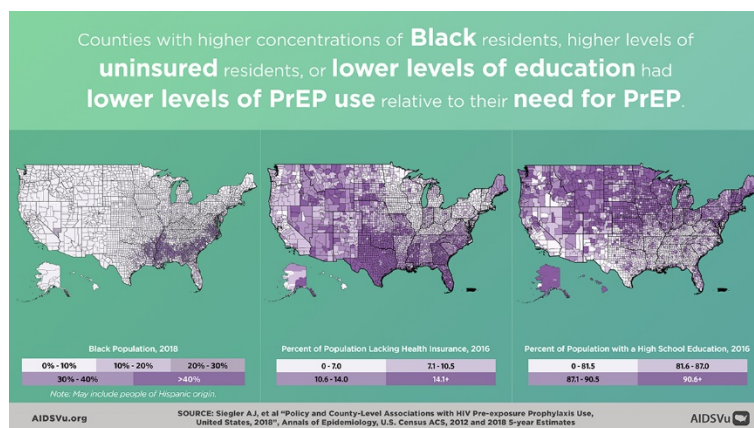
Among U.S. Census regions, the Northeast had the highest rate of PrEP use (106.3 PrEP users per 100,000 population) and the highest PnR (8.5).

- The South had the lowest PnR (3.0) despite having a similar rate of PrEP use (58.6 PrEP users per 100,000 population) to the Midwest (56.8 PrEP users per 100,000 population), indicating fewer PrEP users in the South relative to the need for PrEP in that geographic region.



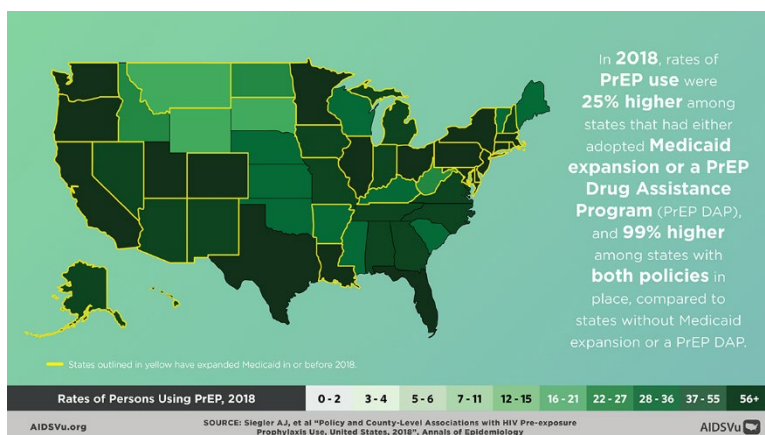
U.S. counties with the highest proportion of Black residents in 2018 had a higher rate of PrEP use (87.8 PrEP users per 100,000 population) but lower overall PnR (3.4) relative to counties with the lowest proportion of Black residents (41.1 PrEP users per 100,000 population and 7.6).

- In other words, U.S. counties with the lowest number of Black residents had an overall PnR that was over two times higher (7.6) when compared to counties with the highest number of Black residents (3.4), indicating fewer PrEP users in those counties relative to the need for PrEP.
- Additionally, among U.S. counties, each 5% increase in the proportion of Black residents was associated with a 5% lower overall PnR.



Relative to states in the U.S. without Medicaid expansion or a Pre-Exposure Prophylaxis Drug Assistance Program (PrEP-DAP), states with *either* Medicaid expansion or a PrEP-DAP had a 25% higher rate of PrEP use. States with *both* Medicaid expansion and a PrEP-DAP had a 99% higher rate of PrEP use.

- In 2018, states with a PrEP-DAP had nearly double the rate of PrEP use (100.6 PrEP users per 100,000 population) and double the PrEP-to-Need Ratio (6.4) relative to states without such programs (51.9 PrEP users per 100,000 population and 3.9 PnR).
- Similarly, U.S. states in 2018 that expanded Medicaid had a PnR that was more than two times higher (6.6) than states that did not expand Medicaid (3.1), indicating fewer PrEP users relative to the need for PrEP in non-Medicaid expansion states.

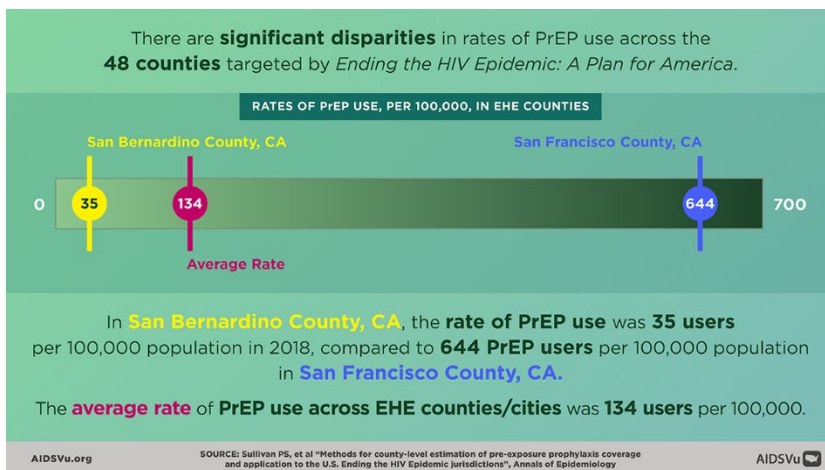


Among PrEP users in the U.S., almost half (49%) were living in the 48 counties targeted by phase one of the *Ending the HIV Epidemic: A Plan for America* (EHE) Initiative.

- 39% of PrEP users in the 48 EHE counties were 25- to 34-years old.
- 94% of PrEP users in the 48 EHE counties were men and 6% were women.

Significant disparities in rates of PrEP use exist across the 48 counties targeted by phase one of the *Ending the HIV Epidemic: A Plan for America* (EHE) Initiative.

- In San Bernardino County, CA, the rate of PrEP use was 35 PrEP users per 100,000 population in 2018. Meanwhile, there were 644 PrEP users per 100,000 population in San Francisco County, CA.
- The average rate of PrEP use among all EHE counties and cities was 134 PrEP users per 100,000 population.



By 2018, 24 of the 48 counties, Washington, DC, and San Juan, PR already achieved the [National HIV/AIDS Strategy \(NHAS\) goal](#) to increase PrEP use by 500% from 2015 to 2020. If current PrEP use rates continue, 94% of EHE counties will achieve the NHAS goal by the end of 2020.

