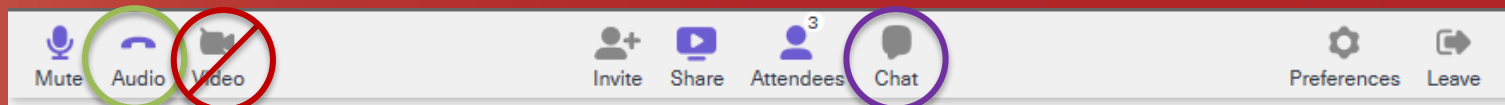


Thank you for joining:

AIDSVu's County-Level PrEP Data & Maps Launch

The webinar will begin at 2:30 pm ET/ 11:30 am PT



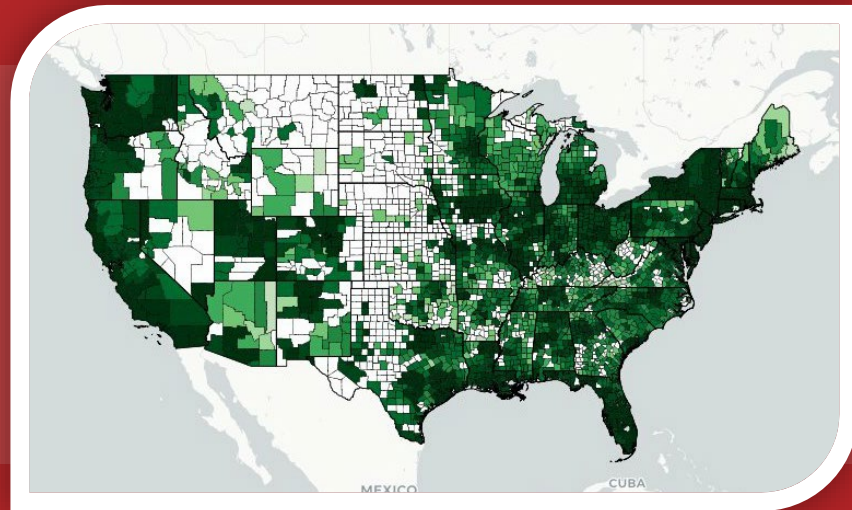
- *Join the call via phone or computer by clicking the phone button, **computer audio is preferred***
- *We will not be using webcams for this presentation, turn off your webcam with the camera button*
- *To submit questions, click the chat icon and type your question before hitting the “enter” key*

AIDSVu



County-Level PrEP Data

Patrick Sullivan, DVM, PhD, Professor,
Department of Epidemiology, Emory University,
Rollins School of Public Health



AIDSVu

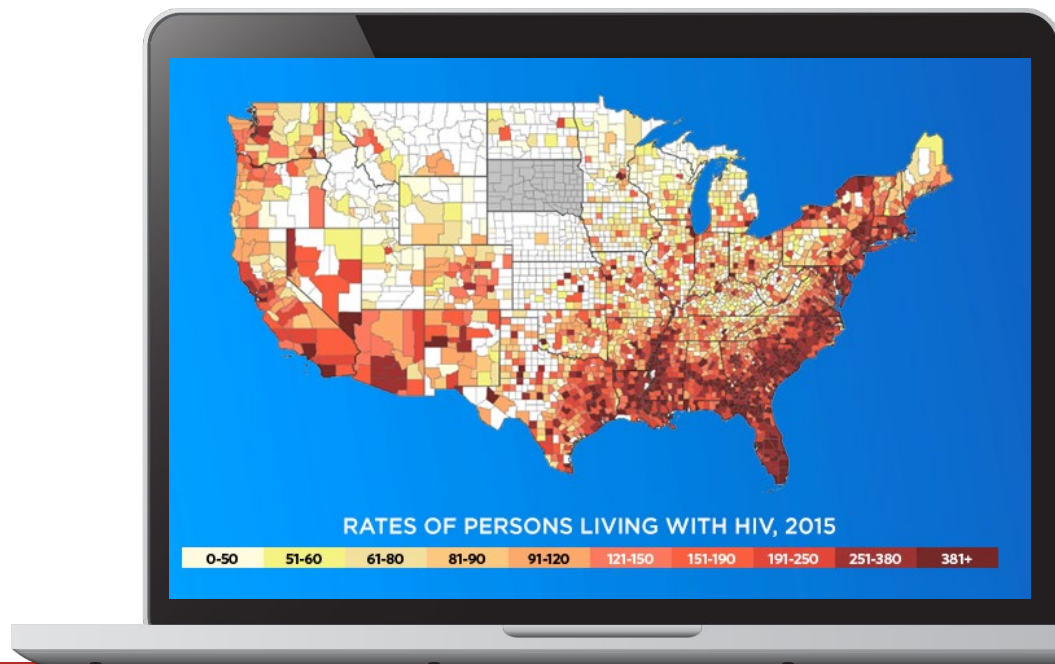


Agenda

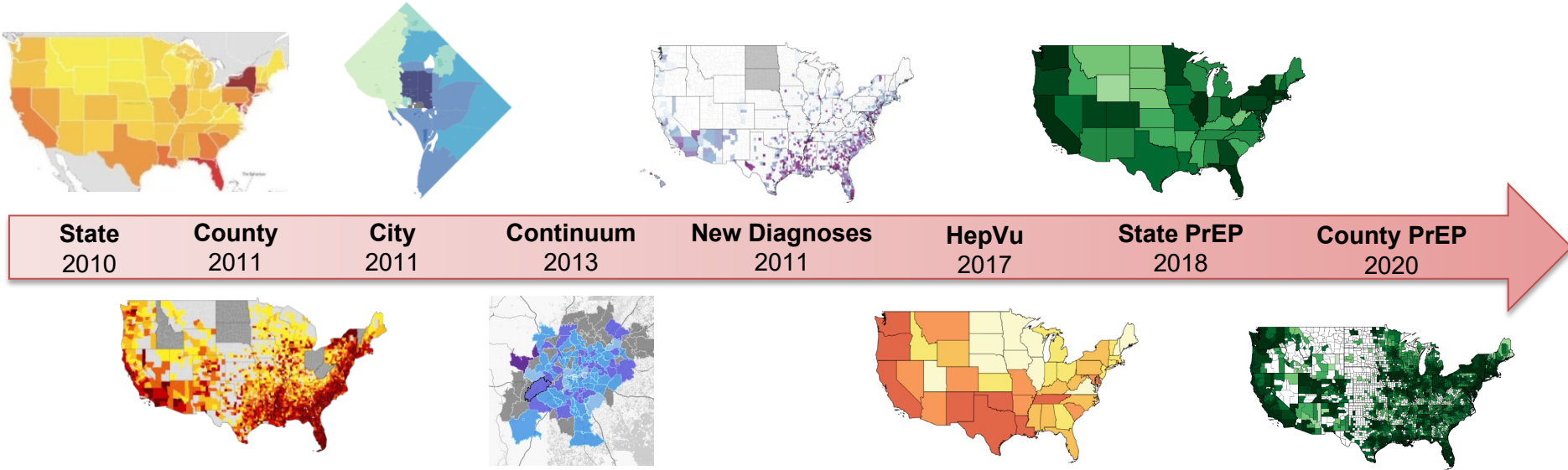
1. AIDSVu Overview
2. AIDSVu's PrEP Data Source & Methods
3. AIDSVu's PrEP Data Insights
4. Other AIDSVu PrEP Data Resources
5. Q&A

AIDSVu's Mission

- Making data widely available, easily accessible and ***locally relevant*** to ***inform public health decision-making***
- Partnership since 2010 between Gilead Sciences and Emory University's Rollins School of Public Health



AIDSVu's History



AIDSVu's PrEP Data Source & Methods

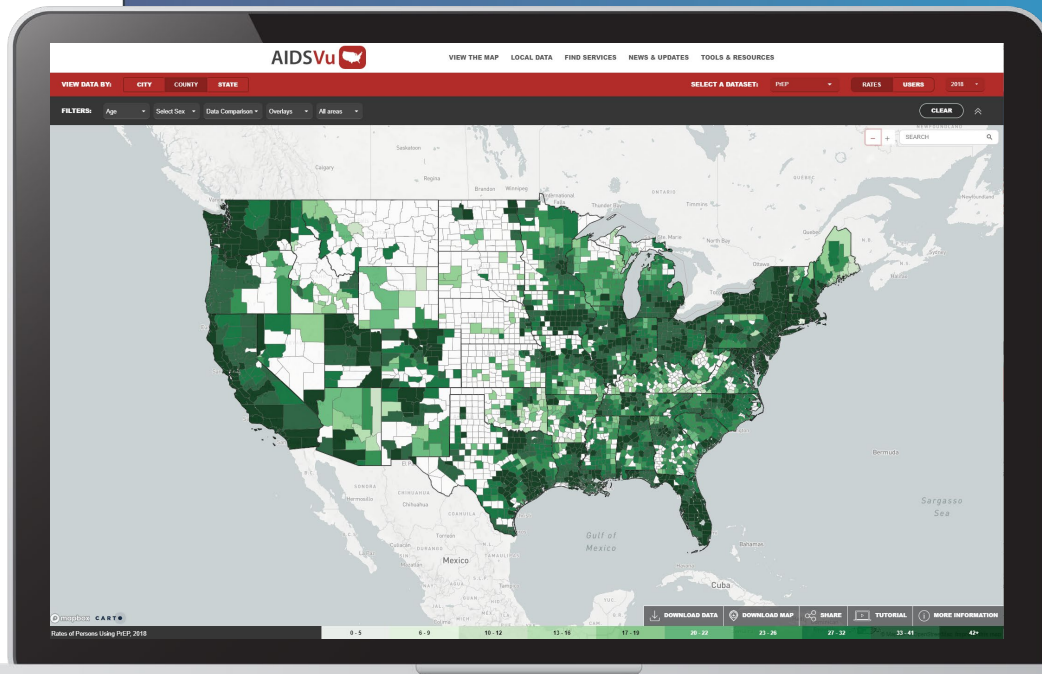
Background on PrEP

- CDC estimates that approximately 1.1 million people are at high-risk for HIV exposure and could benefit from comprehensive HIV prevention strategies, including PrEP
- Number of PrEP users has increased by more than 1,700% since 2012
- PrEP use varies significantly across different sexes, age groups, races/ethnicities, and geographic regions

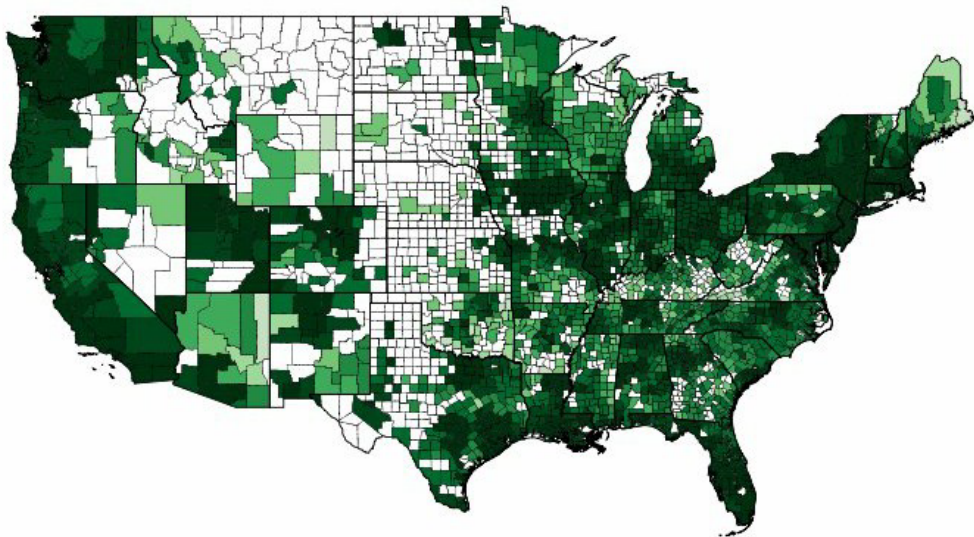


PrEP Data on AIDSVu

- In March 2018, AIDSVu released the **first-ever state-level data** and interactive maps of **PrEP users** and rates of PrEP use per 100,000 population ("PrEP Prevalence")
- **Now**, we are adding the **first ever county-level data on PrEP** (2012-2018).



PrEP Data on AIDSVu



Rates of Persons Using PrEP, per 100,000 population, 2018



County-level maps and datasets include:

- PrEP Users and Rate of PrEP Use
- Yearly data 2012 to 2018
- Overall, by sex, and by age
- Available alongside social determinants of health

Data Source

- **First of its kind data release agreement:** Data obtained from Symphony Health with the support of Gilead Sciences, Inc., and compiled by researchers at the Rollins School of Public Health at Emory University
- **No single entity** collects data on all users of PrEP in the U.S. The exact number of PrEP users is unknown
- Data on AIDSVu derived from a single data source (Symphony Health) – open sample of commercially available data from more than **54,000 pharmacies, 1,500 hospitals, 800 outpatient facilities, and 80,000 physician practices**
- **Validated algorithm** excludes use for HIV treatment, post-exposure prophylaxis, and off-label treatment of chronic Hepatitis B before state-specific weights were applied
- **Data suppression rules were applied**

Data Methods

- **Represent a reliable and consistent metric for PrEP users at the county- and state-level in the U.S. by year**
- **The actual number of PrEP users is likely higher**
 - Dataset does not contain all TDF/FTC prescriptions in the U.S. – for example, dataset does not include data from closed healthcare systems and other entities that do not share their data with Symphony Health.
- **Well suited to be used for public health research and planning purposes**
 - Monitor progress, trends, and disparities in PrEP use at the county- and state-level and among specific age groups or sexes
 - Compare relative levels of PrEP use among counties, states, and regions
 - Support research to investigate questions related to PrEP awareness, access, and use
 - Inform public health planning

Data Methods, Continued

- The **data start as ZIP3**, but ZIP3 **do not always line up with county lines**
- A **validated allocation algorithm** was applied using the 2010 U.S. Census ZIP Code Tabulation Area (ZCTA5) to County Relationship file, **known as “Crosswalk”**
- **PrEP users** residing in ZIP3’s **were distributed into overlapping counties according to population weights** to obtain the number of PrEP users at the county-level
- **Adjusted with state-specific weights**, accounting for missing clinical data

PrEP Data Available on AIDSVu

Raw PrEP Data

- **Consistent, conservative, and minimum number of PrEP users**
- Available for download at county-level
- Prior AIDSVu PrEP maps utilized this method

Adjusted PrEP Data

- **Adjusted with state-specific weights** to estimate the number of PrEP users
- **Accounts for missing clinical data**
- Reliable and consistent metric for PrEP users
- Used for interactive maps and local data profiles
- Available for download at national-, regional-, state-, and county-level

Best Estimate PrEP Data

- **Weighted to account for national estimate that 20% of all PrEP prescriptions are filled at non-participating pharmacies** to provide a best estimate number of PrEP users
- **Accounts for missing pharmacy data**
- Available for download at county-level

PrEP Data Available as Maps & Datasets

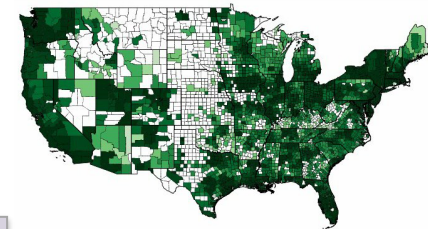
Symphony
Health
Data Set

Algorithm
determines
PrEP script

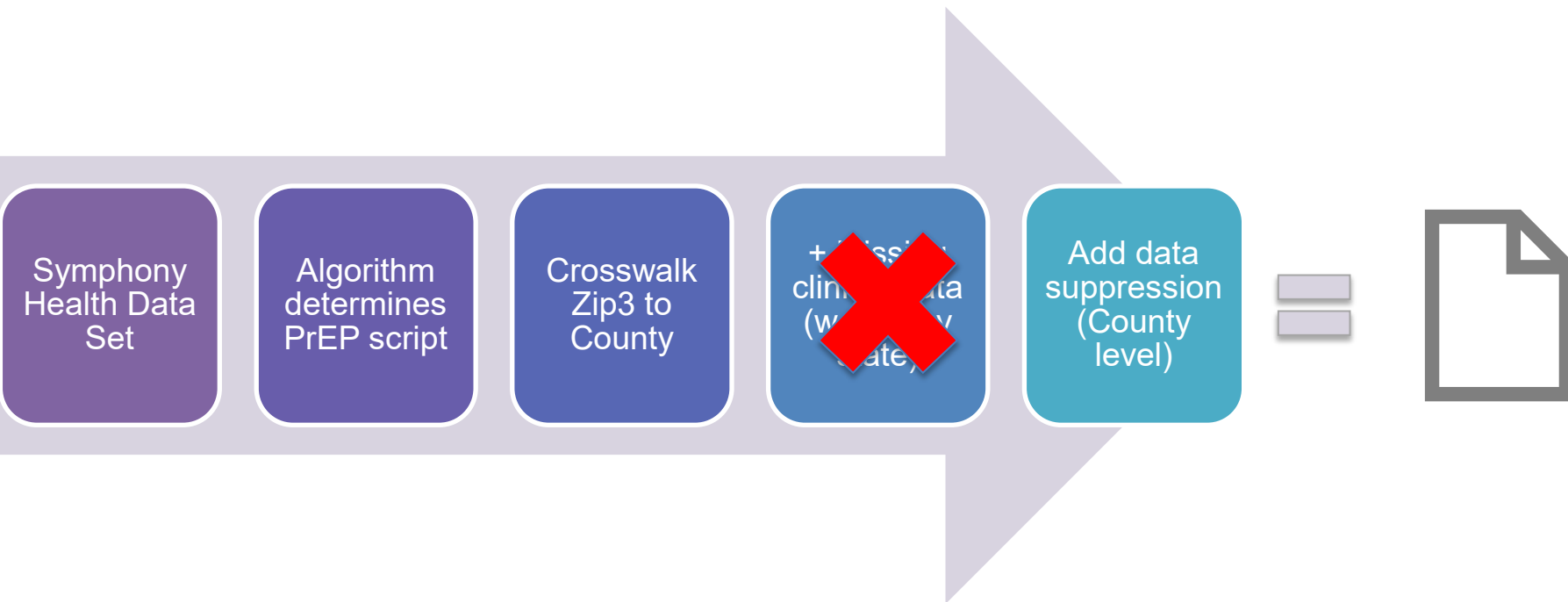
Crosswalk
Zip3 to
County

+ Missing
clinical data
(weight by
state)

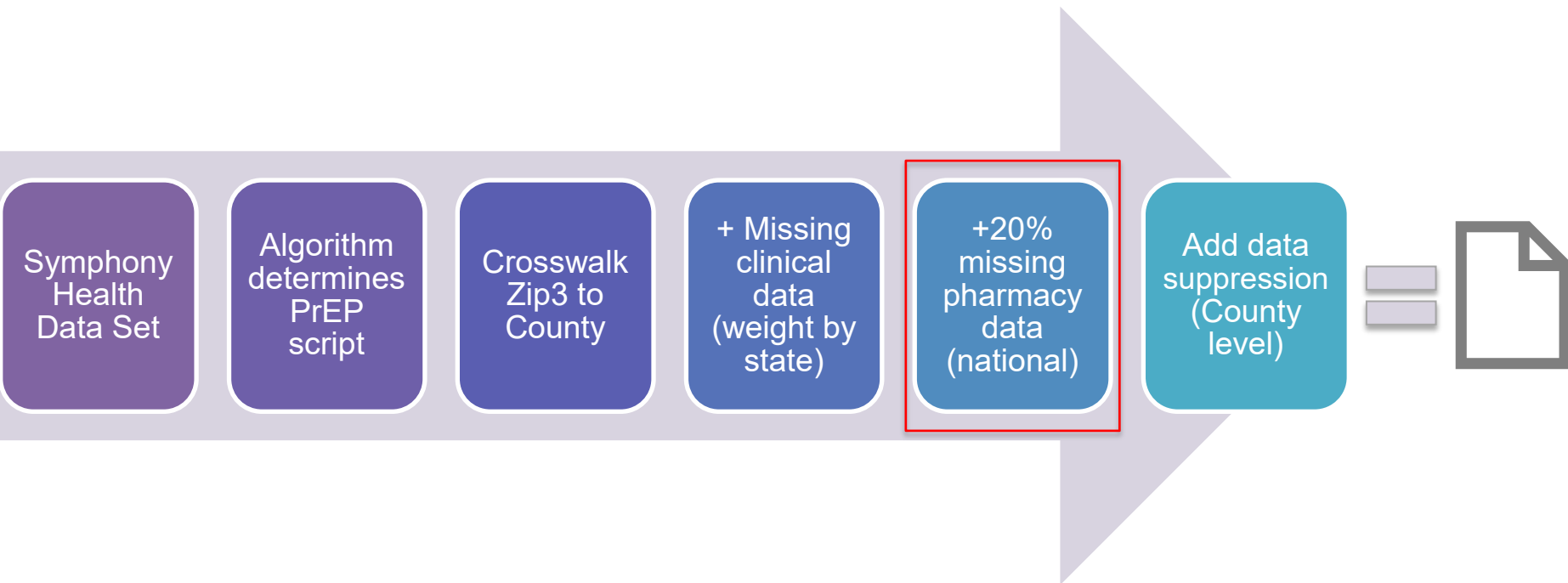
Add data
suppression
(County
level)



PrEP Data Available as Datasets



PrEP Data Available as Datasets



Annals of Epidemiology

- Sullivan et al.'s article in *Annals of Epidemiology*, **Methods for County-Level Estimation of Pre-exposure Prophylaxis Coverage and Application to the U.S. Ending the HIV Epidemic Jurisdictions**
- Siegler et al.'s article in *Annals of Epidemiology*, **Policy and County-Level Associations with HIV Pre-exposure Prophylaxis Use, United States, 2018**

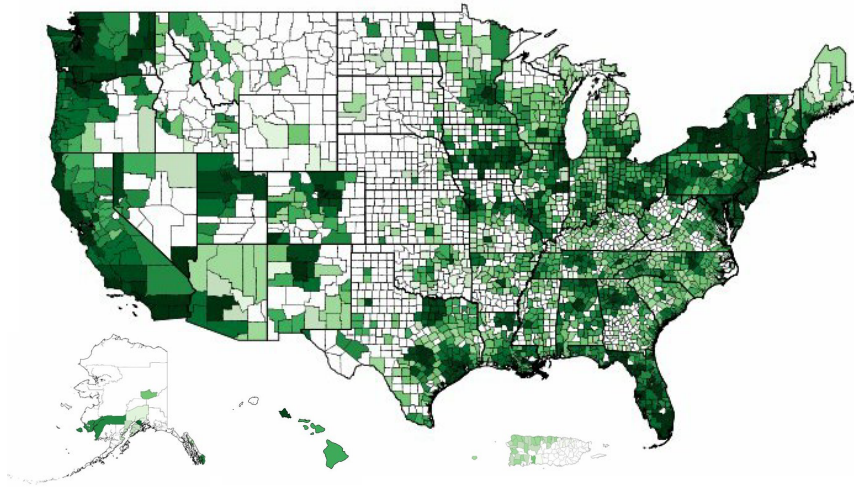


AIDSVu's PrEP Data Insights

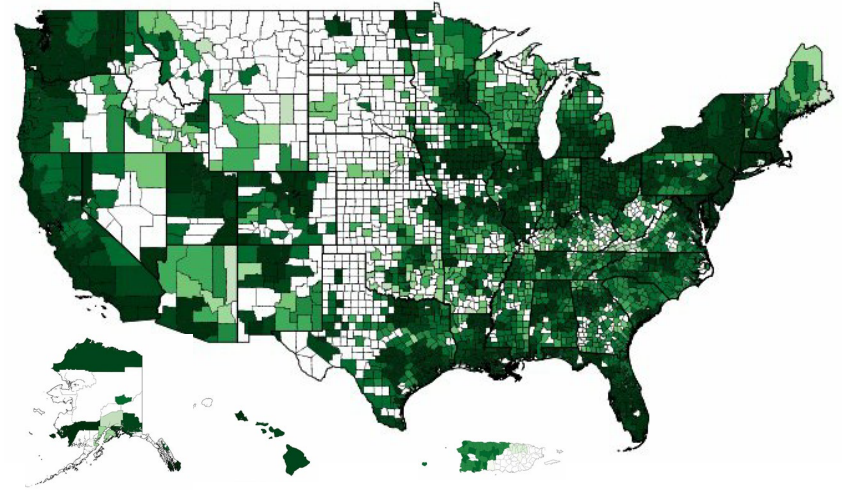


2018 Findings

2017



2018

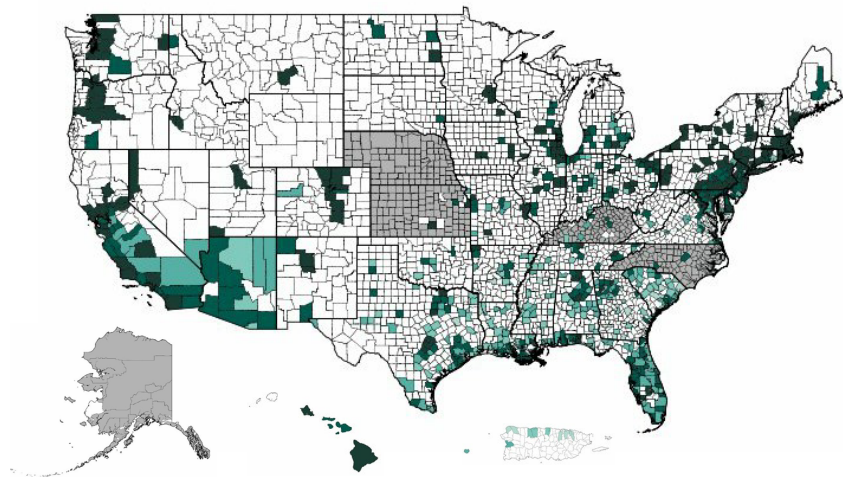


Rates of Persons Using PrEP, per 100,000 population, 2017 vs 2018

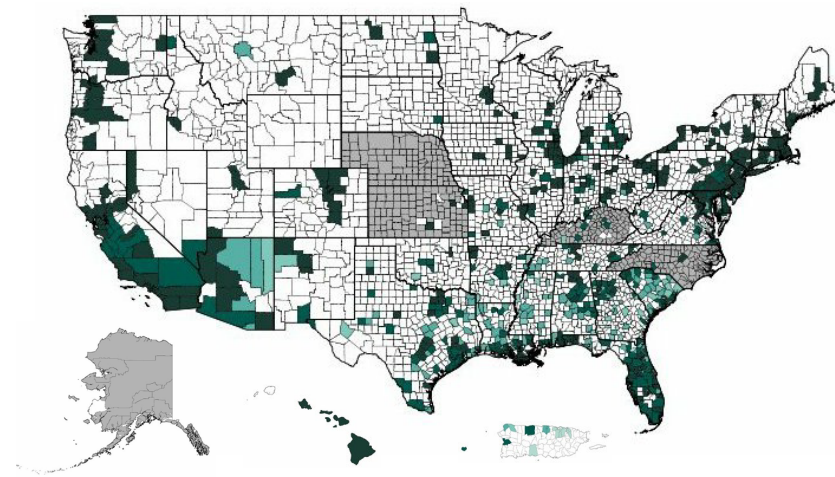


2018 Findings

2017



2018



PrEP-to-Need Ratio (PnR, or the number of PrEP users to the number of people newly diagnosed with HIV), 2017 vs 2018

0.00 - 0.60

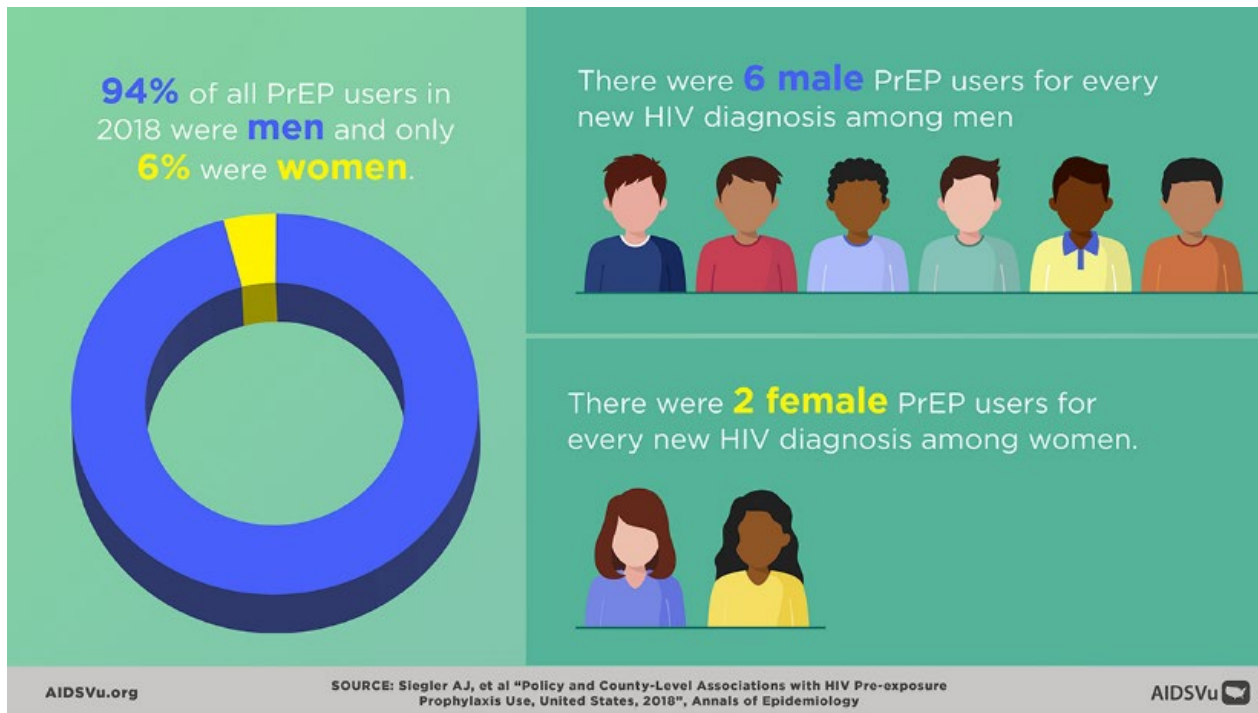
0.61 - 1.17

1.18 - 2.05

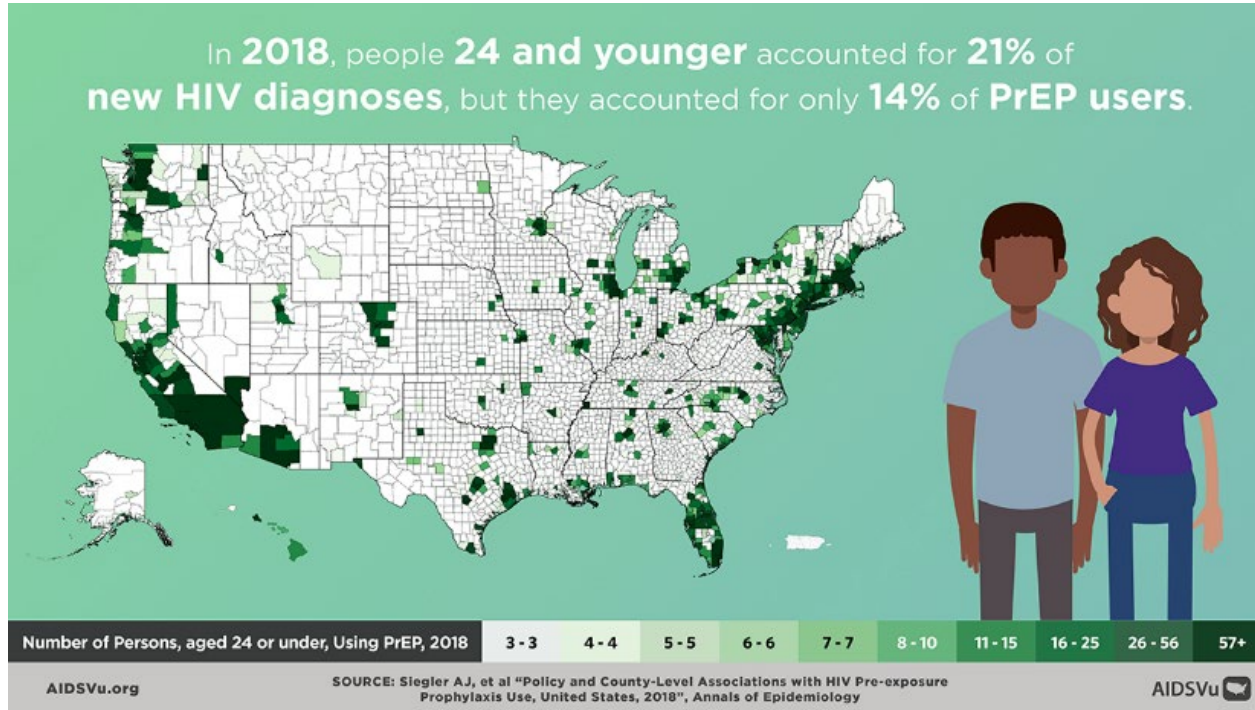
2.06 - 3.86

3.87+

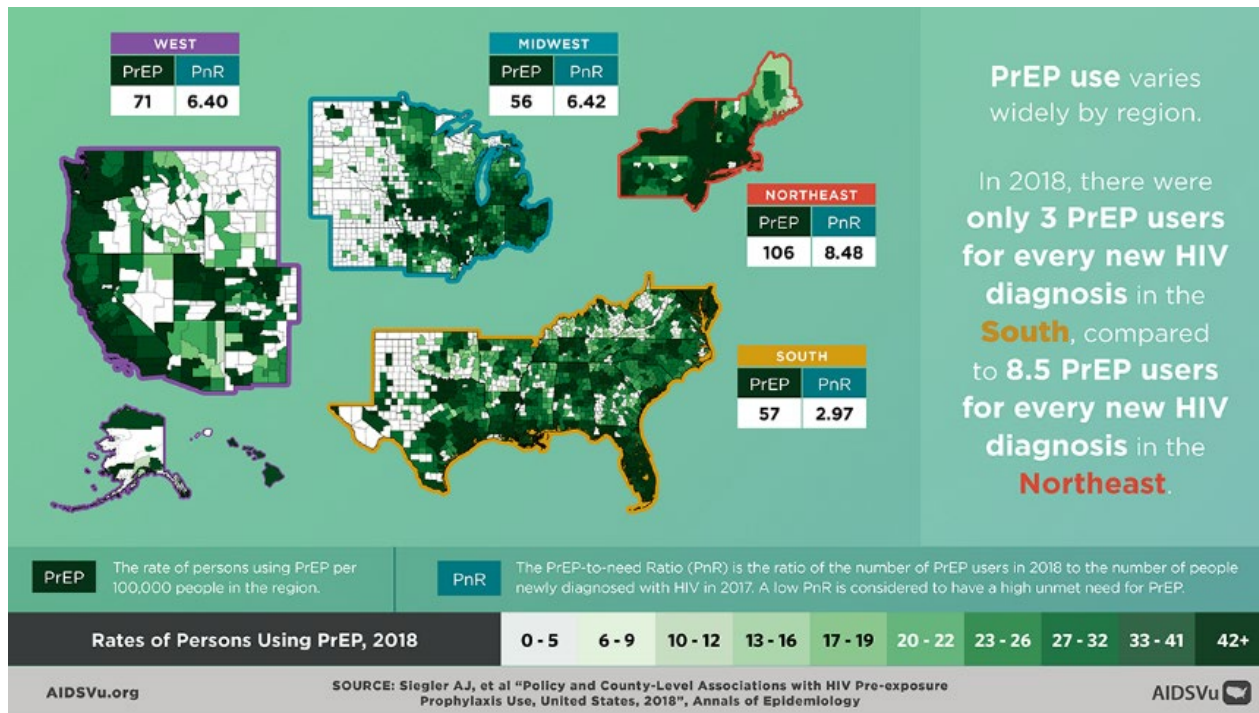
2018 Findings



2018 Findings

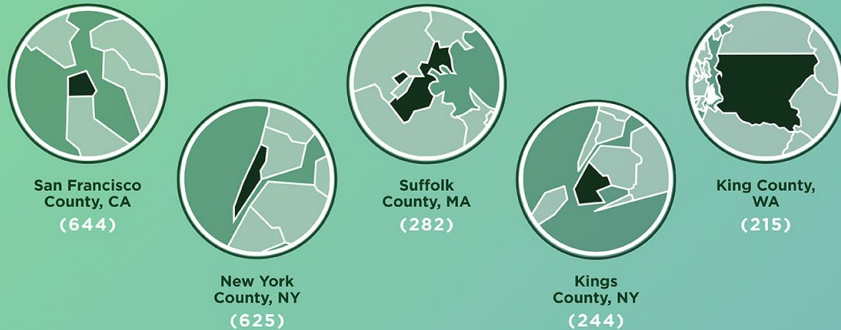


2018 Findings

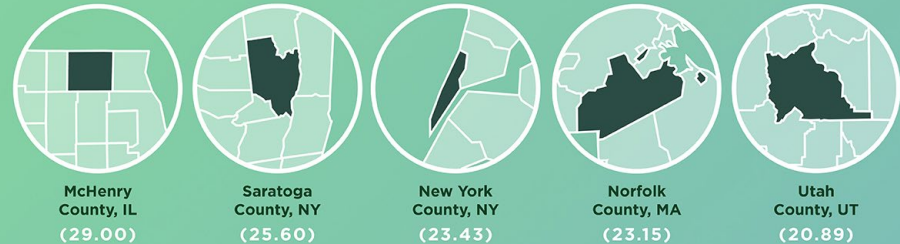


2018 Findings

The **five counties** with the **highest rate of PrEP users** in 2018 included:



The **five counties** with the **highest PrEP use** relative to their **need for PrEP** in 2018 were:

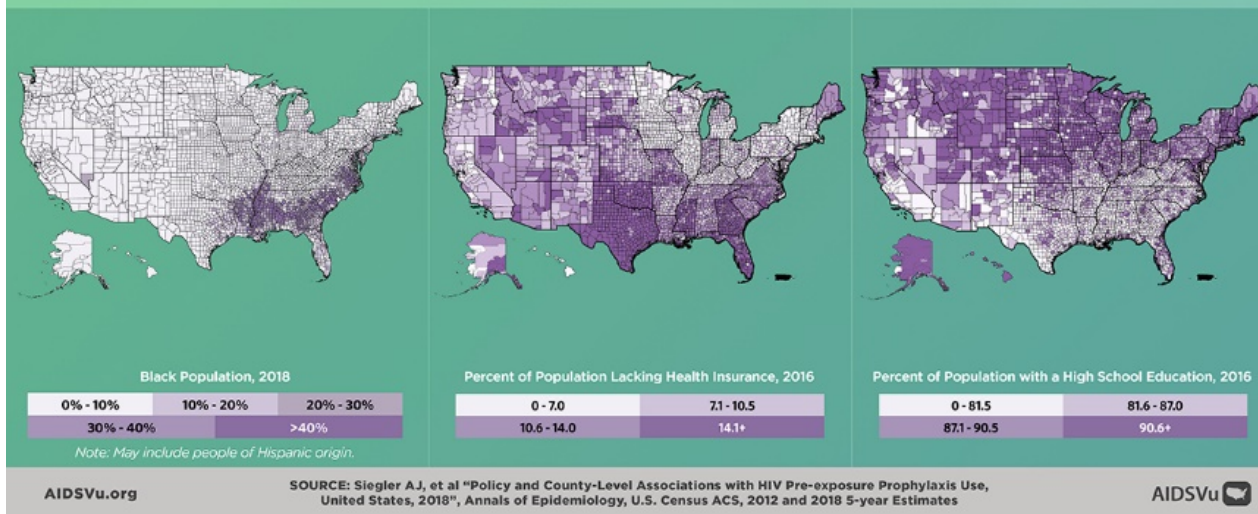


The **PrEP-to-need Ratio (PnR)** is the ratio of the number of PrEP users in 2018 to the number of people newly diagnosed with HIV in 2017. PnR serves as a measurement of how PrEP use compares to the need for PrEP in a population.

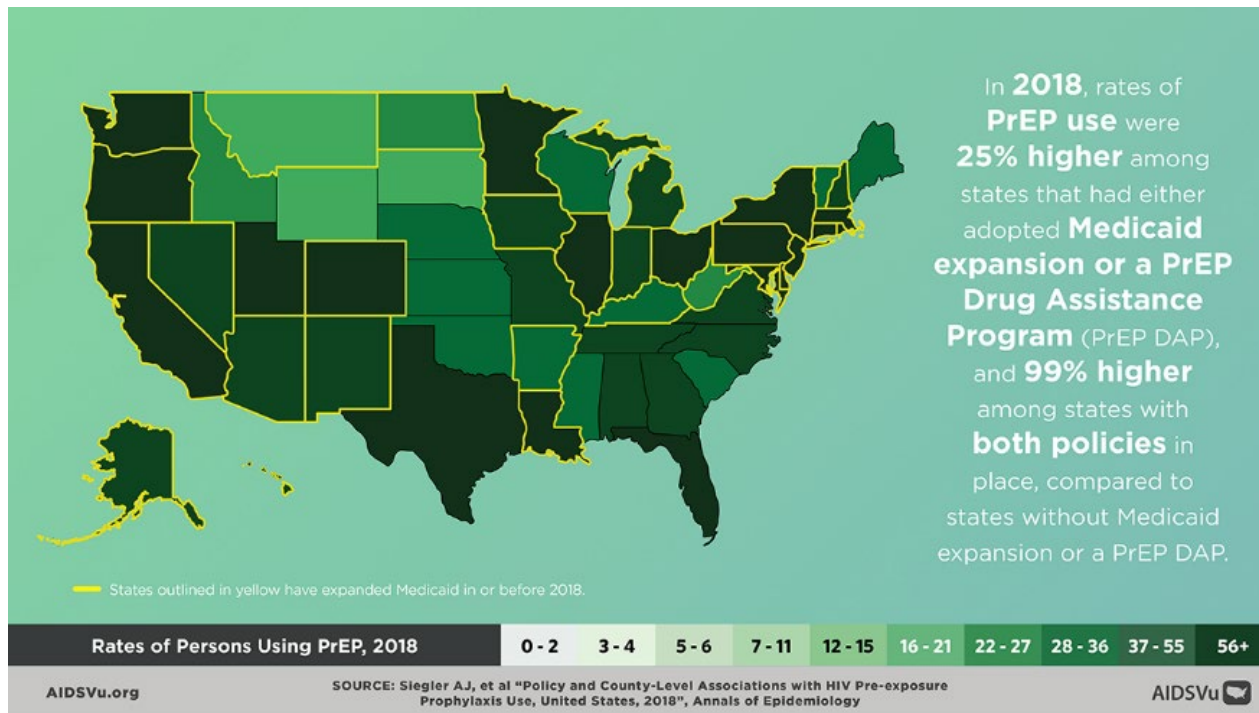


2018 Findings

Counties with higher concentrations of **Black** residents, higher levels of **uninsured** residents, or **lower levels of education** had **lower levels of PrEP use** relative to their **need for PrEP**.



2018 Findings



2018 Findings

There are **significant disparities** in rates of PrEP use across the **48 counties** targeted by *Ending the HIV Epidemic: A Plan for America*.

RATES OF PrEP USE, PER 100,000, IN EHE COUNTIES



In **San Bernardino County, CA**, the **rate of PrEP use** was **35 users** per 100,000 population in 2018, compared to **644 PrEP users** per 100,000 population in **San Francisco County, CA**.

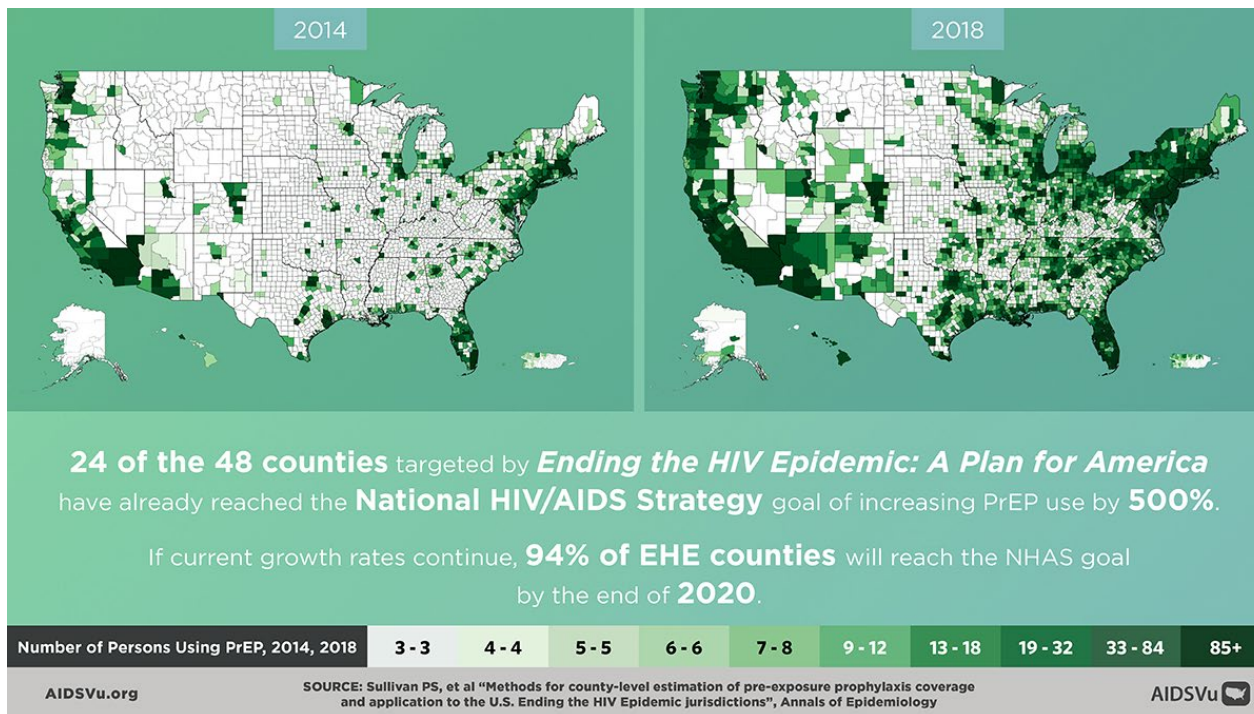
The **average rate** of **PrEP use across EHE counties/cities** was **134 users** per 100,000.

AIDSVu.org

SOURCE: Sullivan PS, et al "Methods for county-level estimation of pre-exposure prophylaxis coverage and application to the U.S. Ending the HIV Epidemic jurisdictions", Annals of Epidemiology

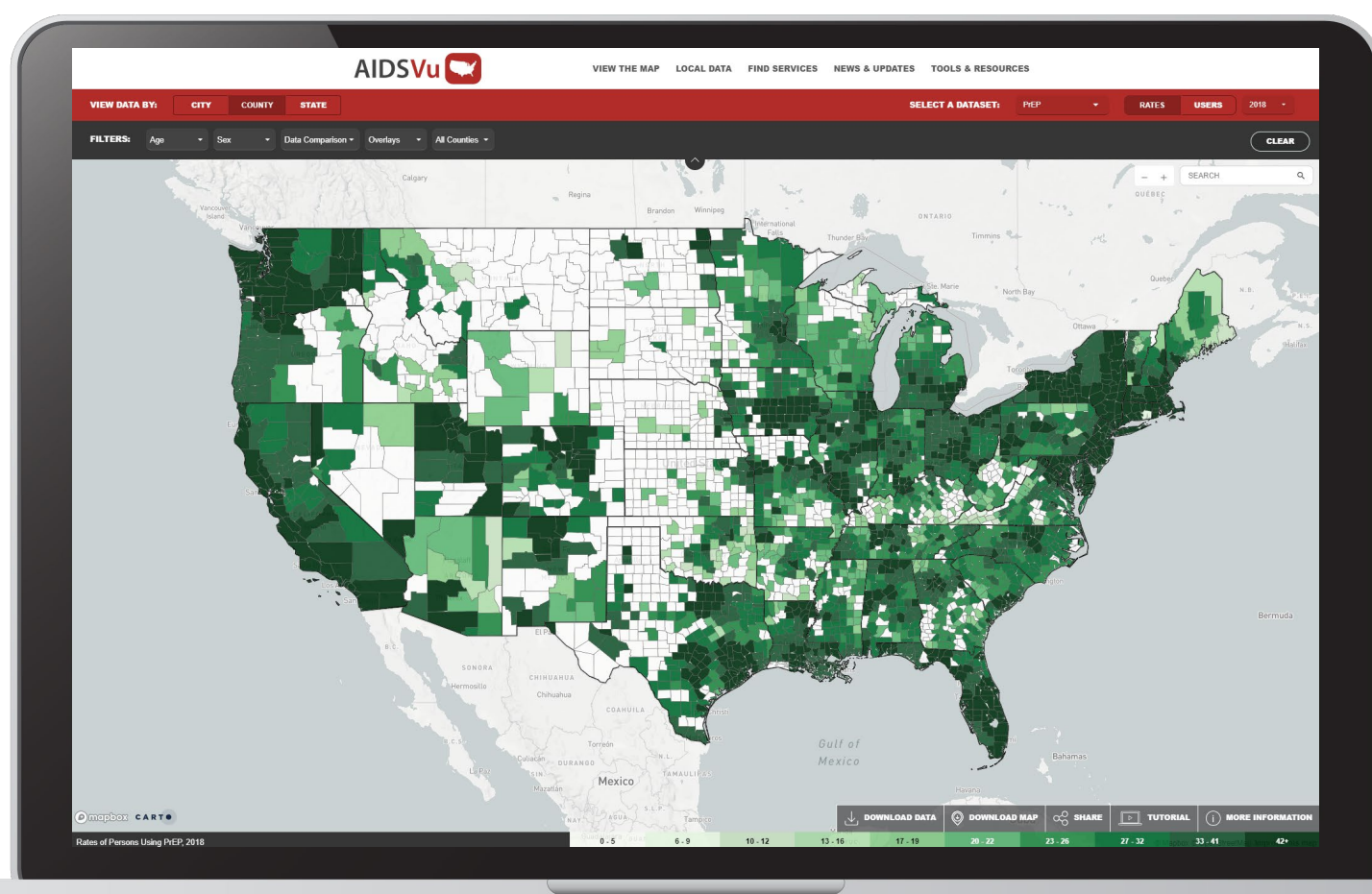
AIDSVu 

2018 Findings

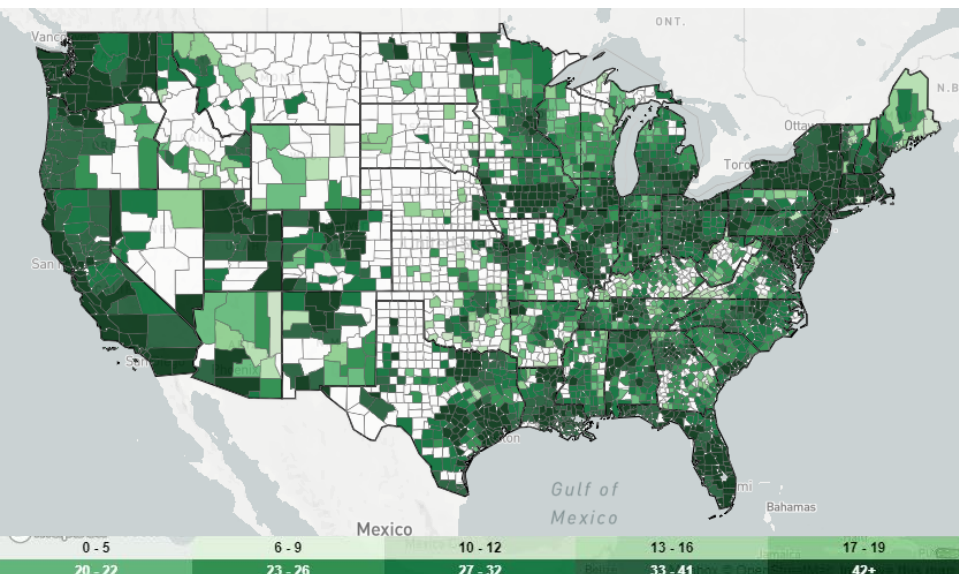


Other AIDSVu PrEP Data Resources

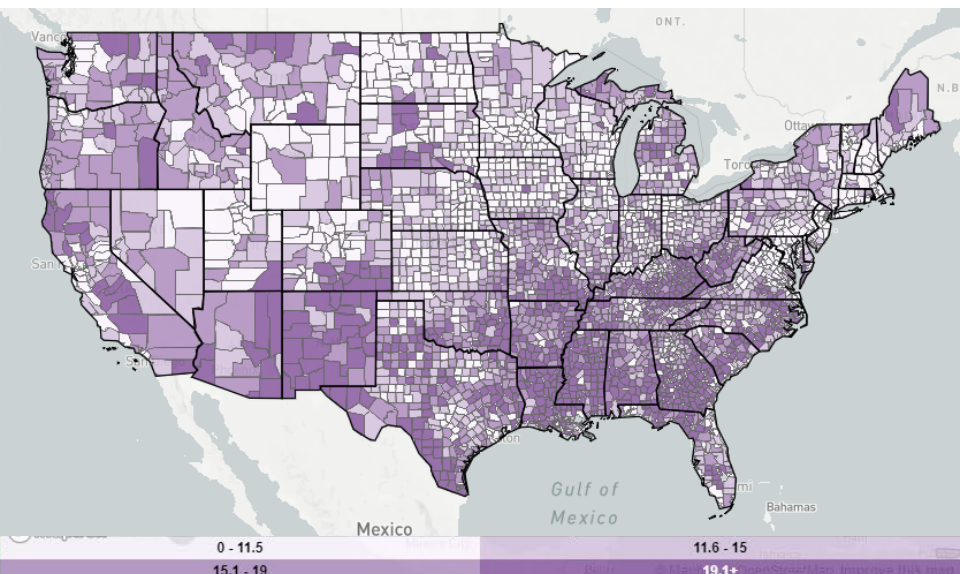
New User Experience



PrEP Users & SDOH Data Comparisons



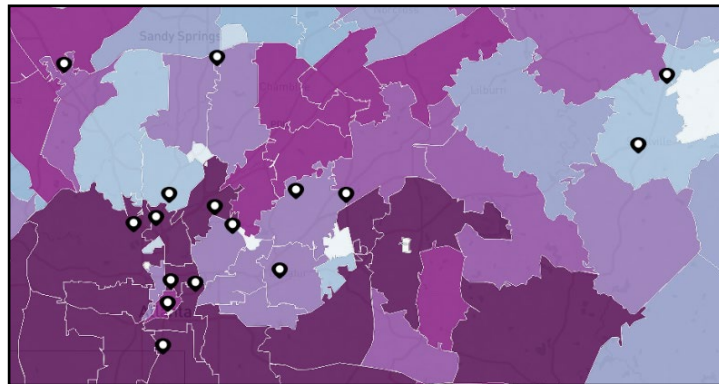
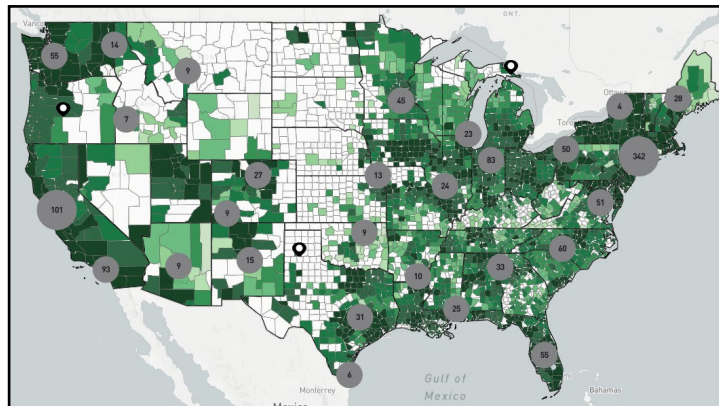
Rates of Persons Using PrEP, 2018



Percent of Population Living in Poverty, 2016

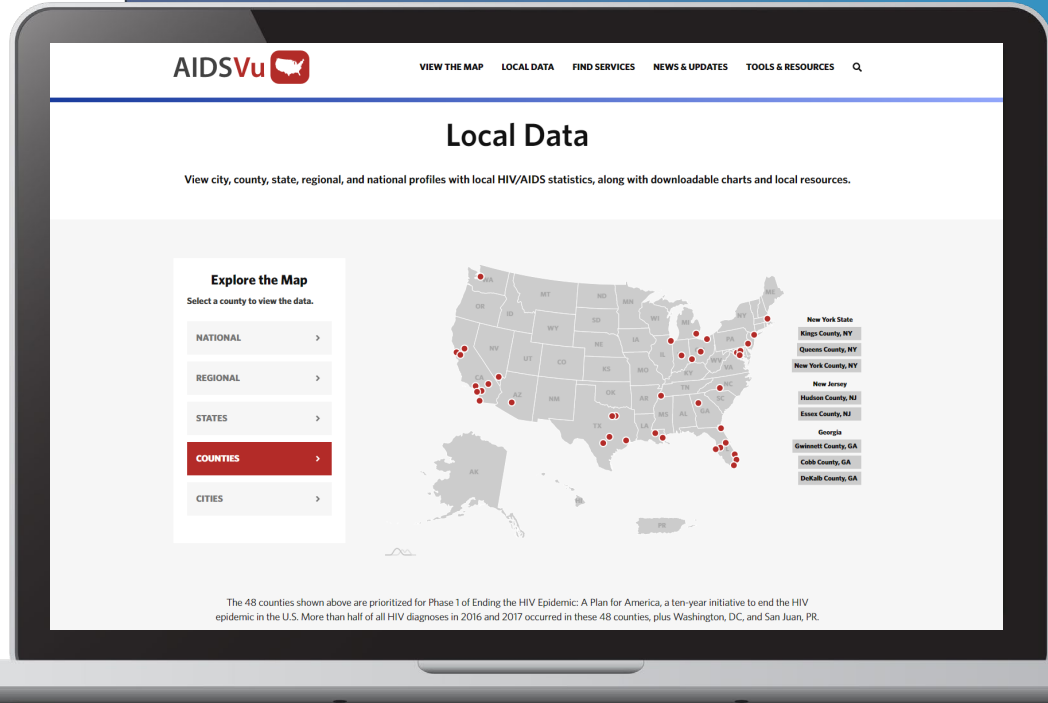
PrEP Locator

- National directory of HIV PrEP Providers in the U.S.
- Developed by Emory University with funding from M•A•C AIDS Fund, now managed by CDC NPIN
- Overlay PrEP providers with AIDSVu maps, or search for provider near you



Local Data Profiles

- PrEP & PnR data included on local data profiles at the national-, regional-, state-, and county-level
 - Number of PrEP users
 - Rate of PrEP users
 - Percent of PrEP users by sex
 - Percent of PrEP users by age
 - Number of PrEP users over time from 2012-2018
 - PnR overall, by sex, by age, and over time from 2012-2018



Deeper Look: PrEP

Comprehensive Resource for PrEP on AIDSVu

- Maps and Service Locator
- Infographics & Video
- Why it Matters
- Guest Blogs
 - Dr. Aaron Siegler
 - Dr. Bisola Ojikutu
 - Dr. Yusuf Ransome

AIDSVu [HOME](#) [ABOUT](#) [CONTACT](#) [SUPPORT](#) [DONATE](#) [PRIVACY](#)

Deeper Look: PrEP

The PrEP utilization rate on AIDSVu rose 41% from 2015 to 2016, with an average 15% increase each year.

What is the PrEP program?

- PrEP is a daily pill that prevents HIV infection.
- PrEP is a long-acting injection that prevents HIV infection.
- PrEP is a topical gel that prevents HIV infection.

Why is PrEP important?

PrEP is a powerful tool to prevent HIV infection. It is a daily pill that prevents HIV infection. It is a long-acting injection that prevents HIV infection. It is a topical gel that prevents HIV infection.

Using the PrEP Data

- **Public Health Officials & Policy Makers**
 - Identify areas with high PrEP utilization and low PrEP need.
 - Identify areas with high PrEP need and low PrEP utilization.
 - Identify areas with high PrEP need and high PrEP utilization.
- **Researchers**
 - Identify areas with high PrEP utilization and low PrEP need.
 - Identify areas with high PrEP need and low PrEP utilization.
 - Identify areas with high PrEP need and high PrEP utilization.
- **Community**
 - Identify areas with high PrEP utilization and low PrEP need.
 - Identify areas with high PrEP need and low PrEP utilization.
 - Identify areas with high PrEP need and high PrEP utilization.

PrEP-to-Need Ratio (PnR)

PrEP-to-Need Ratio, 2016

The PrEP-to-Need Ratio (PnR) is a measure of the effectiveness of PrEP in preventing HIV infection. It is calculated by dividing the number of people who are taking PrEP by the number of people who are at risk of HIV infection.

Interactive Maps

Use the AIDSVu interactive maps to explore PrEP utilization and PrEP need across the United States.

PrEP Services

Find a PrEP service near you.

PrEP Map

Find a PrEP service near you.

Beyond the Map

AIDSVu offers tools and resources to help you explore the data and understand the context of the PrEP data.

- **PrEP Map**
 - Interactive map showing PrEP utilization and PrEP need across the United States.
 - [LEARN MORE](#)
- **Find Services**
 - Find a PrEP service near you.
 - [LEARN MORE](#)
- **Local Data**
 - Explore the data for your local area.
 - [LEARN MORE](#)

Share

Share your findings with others.

Learn From Experts

Read our series of Q&A with leading experts in the field of PrEP.

- **Dr. Aaron Siegler on PrEP**
 - [LEARN MORE](#)
- **Dr. Bisola Ojikutu on PrEP**
 - [LEARN MORE](#)
- **Dr. Yusuf Ransome on PrEP**
 - [LEARN MORE](#)

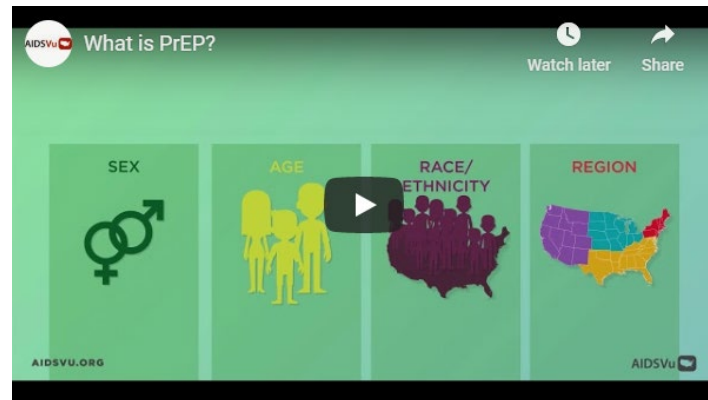
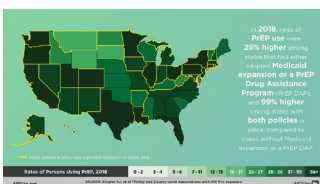
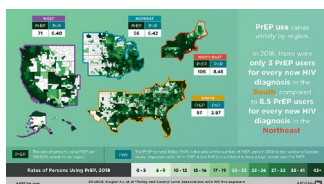
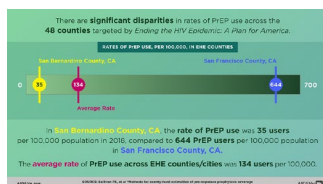
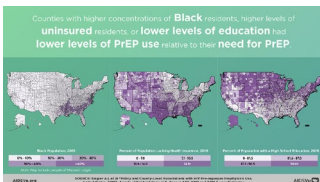
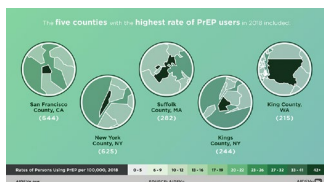
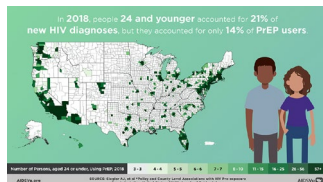
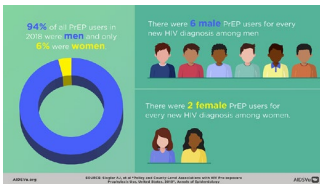
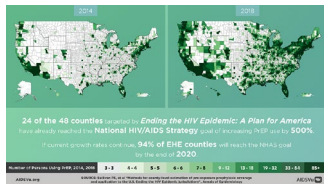
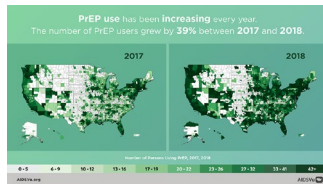
For More Information

Learn more about PrEP and HIV prevention.

- **CDC PrEP Overview**
 - [LEARN MORE](#)
- **National HIV/AIDS Strategy**
 - [LEARN MORE](#)
- **Greater Than AIDS**
 - [LEARN MORE](#)
- **HIV.gov**
 - [LEARN MORE](#)
- **PrEPWatch**
 - [LEARN MORE](#)

AIDSVu [HOME](#) [ABOUT](#) [CONTACT](#) [SUPPORT](#) [DONATE](#) [PRIVACY](#)

Infographics & Video



Downloadable PrEP Data Sets

- Downloadable PrEP datasets at the national-, regional-, state-, and county-level for Adjusted PrEP Data
- Downloadable PrEP datasets at the county-level for Raw PrEP Data and Best Estimate PrEP Data
- These datasets can be used by researchers, health departments, or others for their own analyses



Help Us Share!

- **Forward the eBlast's** to your colleagues and networks
- **Encourage them to watch** the recorded public webinar
- **Share the infographics and Q&As** via social
- **Use county-level PrEP data and maps** in your work
- **Let us know how you've used AIDSVu's PrEP data** in your work
- **Reach out to us** to see how AIDSVu can support your efforts



Thank You! Questions?

 info@AIDSVu.org

 AIDSVu

 @AIDSVU

AIDSVu 